

The Reason for the Season

From about the time male halibut are eight years old and female halibut are twelve, they travel once a year to the continental slope to reproduce. There, the females lay their eggs which are then fertilized by the males.

Remember that halibut can reach weights of 500 pounds?

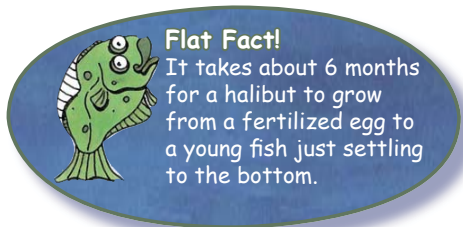
Well, that's only partly true. While male halibut top out at about 100 pounds — or the size of one 11-year-old human — female halibut keep growing, and they do it faster than the males too.

Why are females bigger?

The bigger the female halibut, the more eggs she can lay. So while a 50-pounder will lay about 500,000 eggs, a 250-pounder might lay 4 million eggs!

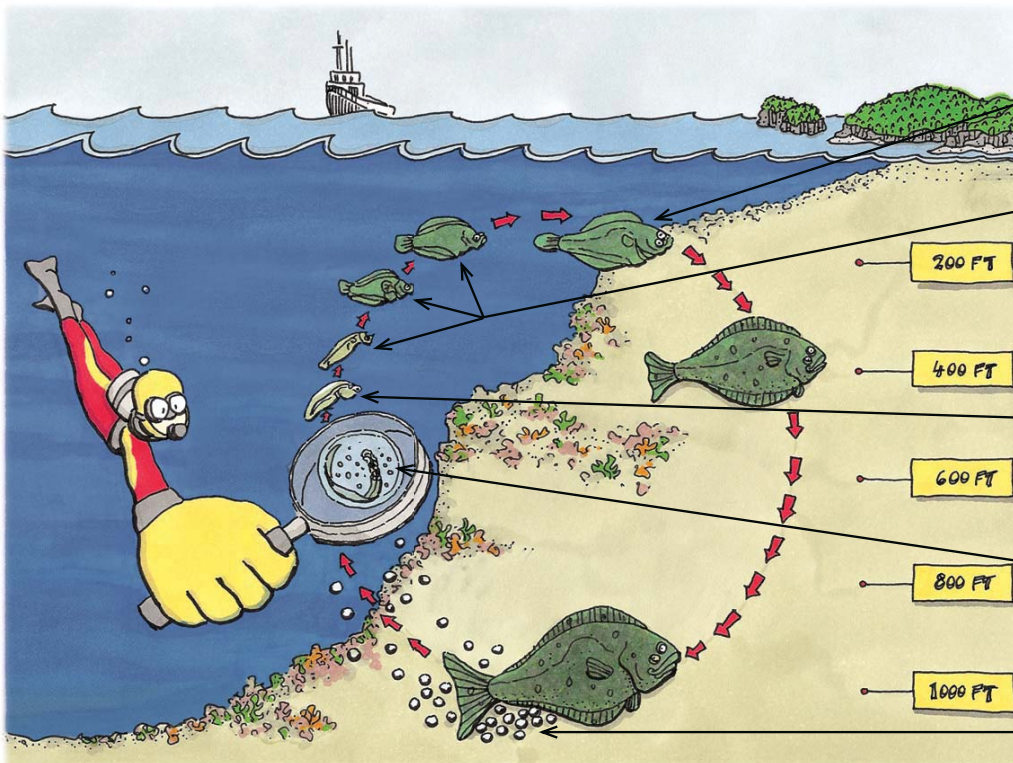
Flat Fact!

It takes about 6 months for a halibut to grow from a fertilized egg to a young fish just settling to the bottom.



G continental slope

Halibut Life Cycle



• **Young halibut** The fish settles to the bottom in shallow water. By this time it is about the length of your thumb.

• **Postlarva** The fins and inside organs develop, and the small fish can control where it wants to go just enough to be able to capture food floating nearby.

• **Larva** The tiny fish feeds off of a yolk sac that is still attached to its body. As the yolk sac is used up, the fish becomes less dense and floats toward the ocean surface.

• **Embryo**

• **Fertilized Eggs**

Pacific halibut life cycle from egg to adult.