

2010 IPHC Staff Recommendations

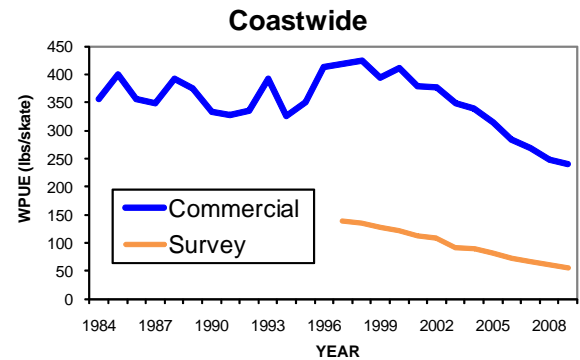
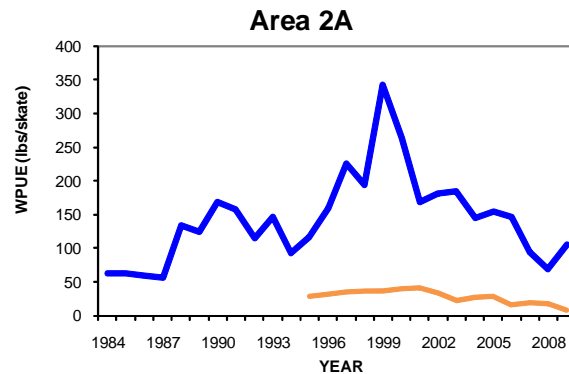
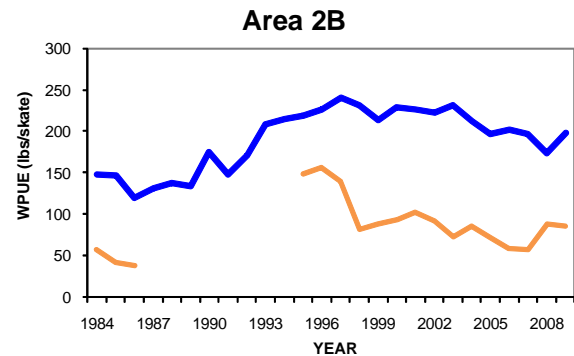
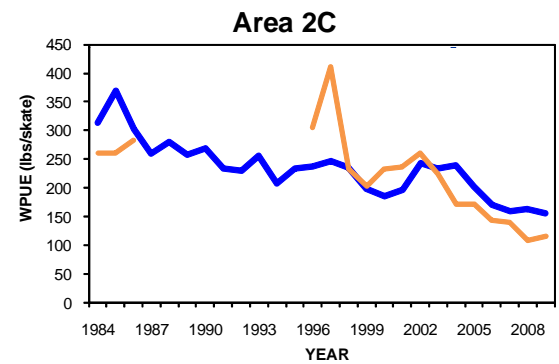
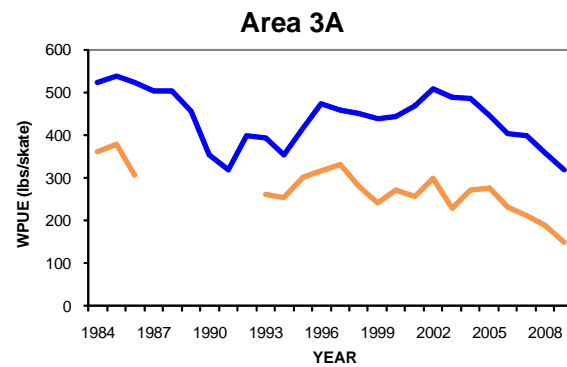
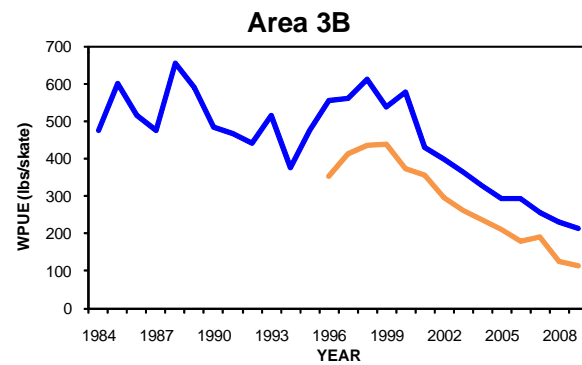
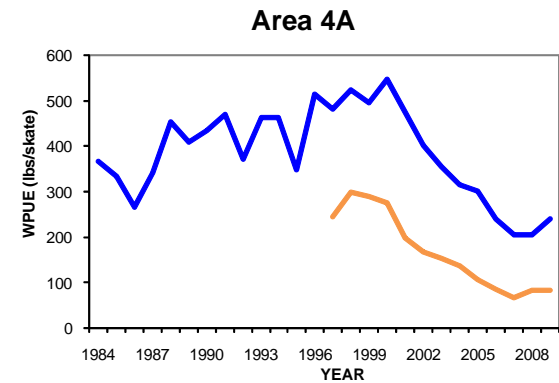
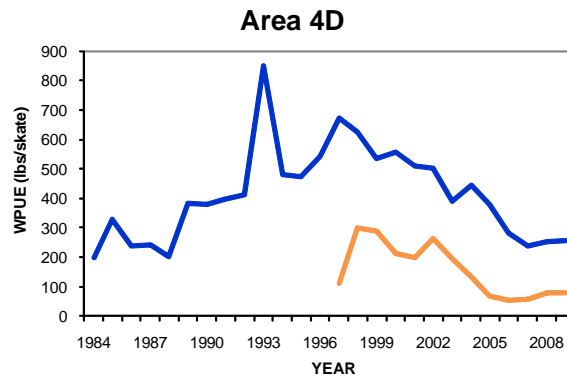
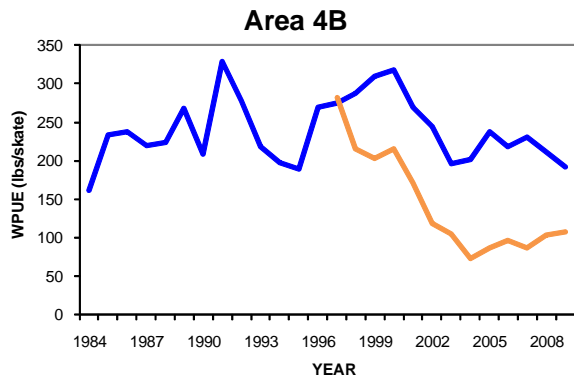
Bruce M. Leaman and Heather L. Gilroy



Stock Condition Indicators

- ❖ Survey WPUE
- ❖ Commercial WPUE
- ❖ Analytic stock assessment
- ❖ Independent estimates of absolute abundance

Recent changes in WPUE

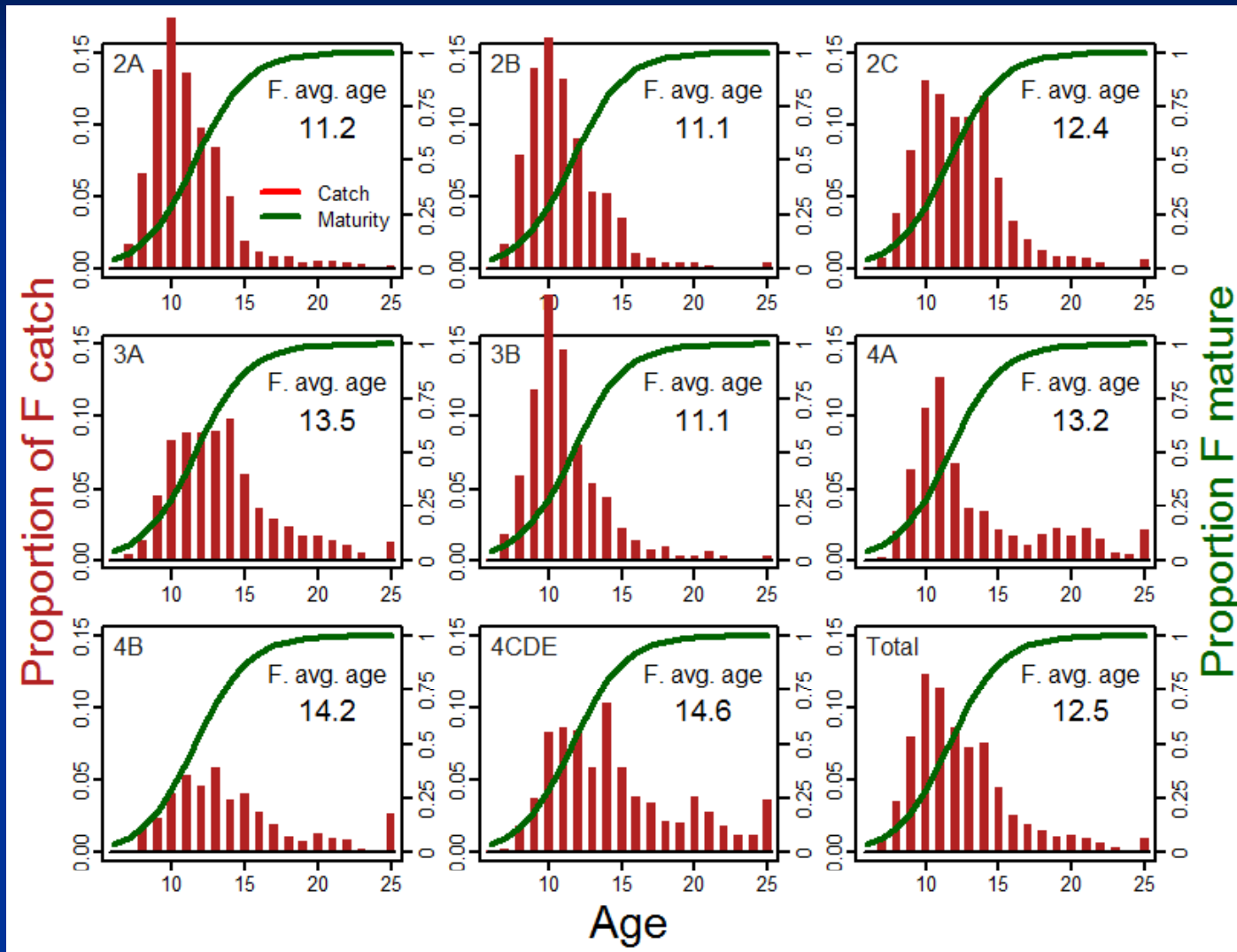


Catch Limit Concerns

- ❖ Higher than target harvest rates in Area 2
- ❖ Catch composition
- ❖ Agency catch limit targets exceeded in some sport fisheries

- ❖ Coherence of independent indices of absolute abundance (agency trawl surveys, IPHC assessments)

2009 commercial female catch age composition and maturity schedule



Apportionment and Adjustments

Adjustment Factors

- ❖ Hook competition
- ❖ Survey timing
- ❖ Depth stratification

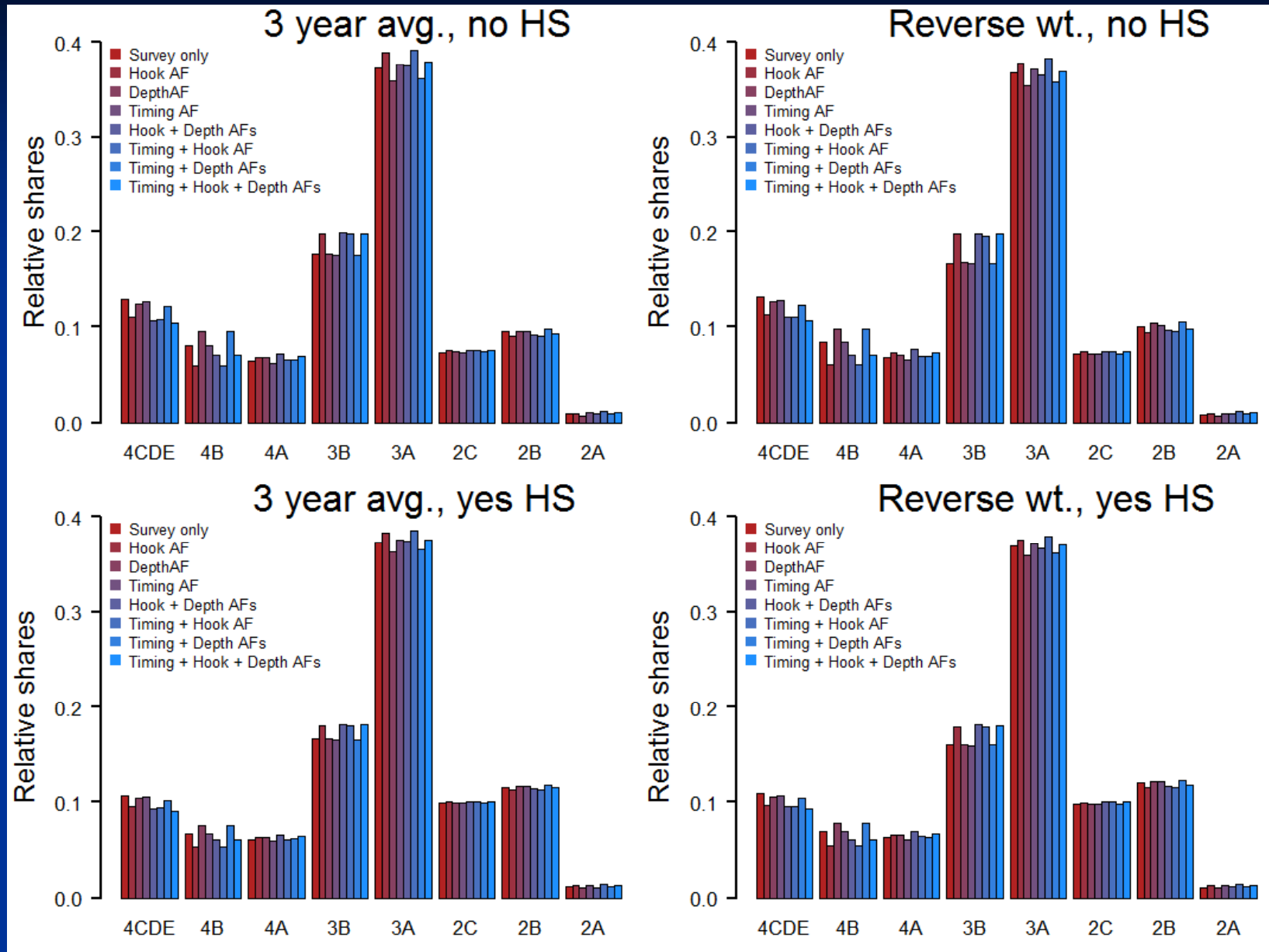
Time weighting

- ❖ Three-year simple average (1:1:1)
- ❖ Three-year reverse weighted (2:2:1)

Data Combinations

- ❖ Survey data alone
- ❖ Survey data:15-yr removal share (2:1 ratio)

Apportionment shares



Apportionment Adjustment Evaluation I

❖ Hook competition



- ❖ Reflects availability of baits to halibut
- ❖ Data available
- ❖ Only one of many potential correlates possible

❖ Survey timing




- ❖ Reasonable premise
- ❖ Data available
- ❖ Staff developed method to estimate timing effect


❖ Depth stratification



- ❖ Post-stratification undesirable
- ❖ Sensitive to data and strata definition
- ❖ No areas have AF significantly different from 1.0

Apportionment Adjustment Evaluation II

- ❖ **Time weighting :** **Simple average (1:1:1)** 
 - ❖ Index inherently variable, needs averaging
 - ❖ Reverse weighting places too much emphasis on the most recent data
 - ❖ Inter-annual variability may be unrelated to abundance
 - ❖ Can result in overly aggressive harvesting
 - ❖ Will be evaluated formally during 2010

- ❖ **Data combinations :** **Survey data alone** 
 - ❖ Surveys highly standardized and consistent
 - ❖ Historical shares will not respond to stock abundance

2010 Projected Other Removals

	2A	2B	2C	3A	3B	4A	4B	4CDE	Total
Sport catch	0.401	1.095	2.032	5.616	0.025	0.039	0.000	0.000	9.208
O32 bycatch	0.245	0.105	0.128	1.918	0.862	1.063	0.218	2.340	6.879
Personal use	0.029	0.405	0.458	0.337	0.042	0.020	0.005	0.046	1.342
O32 wastage	0.001	0.012	0.012	0.042	0.021	0.009	0.006	0.014	0.117
Total	0.676	1.617	2.630	7.913	0.950	1.131	0.229	2.400	17.546
Total, excludes sport catch in Areas 2A and 2B and personal use in 2A	0.246	0.522	2.630	7.913	0.950	1.131	0.229	2.400	16.021
GHL value in 2010			0.788	3.650					
Guided - actual 2009			1.302	2.564					
Unguided – actual 2009			1.244	1.966					
Total – actual 2009			2.546	4.530					

Catch Limits based on Coastwide Assessment, Hook Competition and Timing Adjustments to Survey Apportionment

Reg Area	Exploitable biomass	Harvest Rate	Total CEY	2009 Other Removals	2009 Catch Limit	2010 Fishery CEY	Slow Up-Fast Down Adjustment	2010 Catch Limit Recomm.	
2A	4.09	20.0%	0.82	0.25	0.95	0.57	+0.19	0.76	1,4
2B	30.38	20.0%	6.08	0.52	7.63	5.55	+1.04	6.59	2,4
2C	25.10	20.0%	5.02	2.63	5.02	2.39	+1.31	3.71	4
3A	130.96	20.0%	26.19	7.91	21.70	18.28	+1.71	19.99	4
3B	65.72	15.0%	9.86	0.95	10.90	8.91	+1.00	9.90	4
4A	21.67	15.0%	3.25	1.13	2.55	2.12	+0.22	2.33	4
4B	19.86	15.0%	2.98	0.23	1.87	2.75	-0.59	2.16	3
4CDE	36.21	15.0%	5.43	2.40	3.46	3.03	+0.21	3.25	4
Total	334.00	17.9%	59.63	16.02	54.08	43.61	+5.09	48.70	

Note: Exploitable biomass is coastwide assessment, survey partitioning; Hook & Timing AFs; 1:1:1 wts

¹ Catch limits and Fishery CEY for 2A includes commercial, sport, and treaty subsistence catches

² Catch limits and Fishery CEY for 2B includes commercial and sport catch

³ Calculated as 2009 catch limit plus 1/3 of the difference between 2010 Fishery CEY and 2009 Catch Limit

⁴ Calculated as 2009 Catch Limit minus 1/2 of the difference between 2010 Fishery CEY and 2009 Catch Limit

Assumes GHL of 0.788 Mlb in Area 2C, 3.65 Mlb in Area 3A under Other Removals

Other removals for 2C and 3A are adding projected unguided harvest to the applicable GHL

Management Recommendations

Fishing periods and catch sharing

- Staff proposes March 15 - November 15 for quota share fisheries.
- Area 2A commercial and treaty Indian fisheries should fall within adopted season.
- In 2A, a series of 10-h periods starting June 24 for the directed fishery.
- Endorse Management Councils' catch sharing plans for Areas 2A and 4CDE.
- Endorse DFO commercial:sport allocation of 88%:12% for Area 2B.

Regulatory Proposals

IPHC Staff Proposals

- ❖ **Area 2A License Requirement:** Change the regulations to reflect that Area 2A IPHC license requirements are not for persons fishing in Subarea 2A-1 as members of U.S. treaty Indian tribes.
- ❖ **License Numbers and State Fish Tickets:** Change regulation so that the vessel number required on State fish tickets is the state, federal, or tribal vessel number (not IPHC vessel number). Add to regulations that Washington tribal tickets can be used for landings; IPHC regulations that apply to State tickets would apply to tribal tickets.
- ❖ **Cape Spencer Light:** Update coordinates for this light to 58°11'56"N, 136°38'26"W .