

Commercial Fishery Removals

Heather L. Gilroy

Commercial Fishery Removals

- By regulatory area
 - Legal-sized halibut retained (commercial catch)
 - Legal-sized halibut discarded (wastage)
 - Sublegal-sized halibut discarded (wastage)

Commercial Catch: Landing Records

Source of B.C. landing records

- Validation log with 100% validation dockside by contractor
- Imported to IPHC database

Source of WA/OR/CA landing records

- State fish ticket data
- Imported into IPHC database

Commercial Catch: Landing Records

Source of Alaska

- Imported from interagency database
- Entered into database (eLandings) from:
 - Conventional ADF&G fish tickets by IPHC and ADF&G staff
 - Web entry by processors (IFQ and tickets)
 - Data validation on entry

Commercial Catch: Landing Records

Data

- Landings by vessel by trip
- State and federal permits
- Landed weight of halibut: disposition and condition
- Landing date, buyer, port
- Catch by state areas

Verification of Landing Data

Conversions

- Landed weight to net weight
- State statistical area to IPHC statistical area

Comparisons to other data sources

- Alaska with IFQ/CDQ data
- WA with sablefish landing data
- 2A directed to calling records and samplers summaries
- 2A tribal to summaries provide by tribes

Fishing Logbook Records

Source and regulations

- All vessels 26 feet and over required to record in defined logbook; exception 2A troll fishery
- B.C. requirement to mail in at the end of the season
- Collected during interviews by port samplers
- All areas, logbook requested by mail after season

Logbook Records

Vessel and landing data

- Used to link to landing records

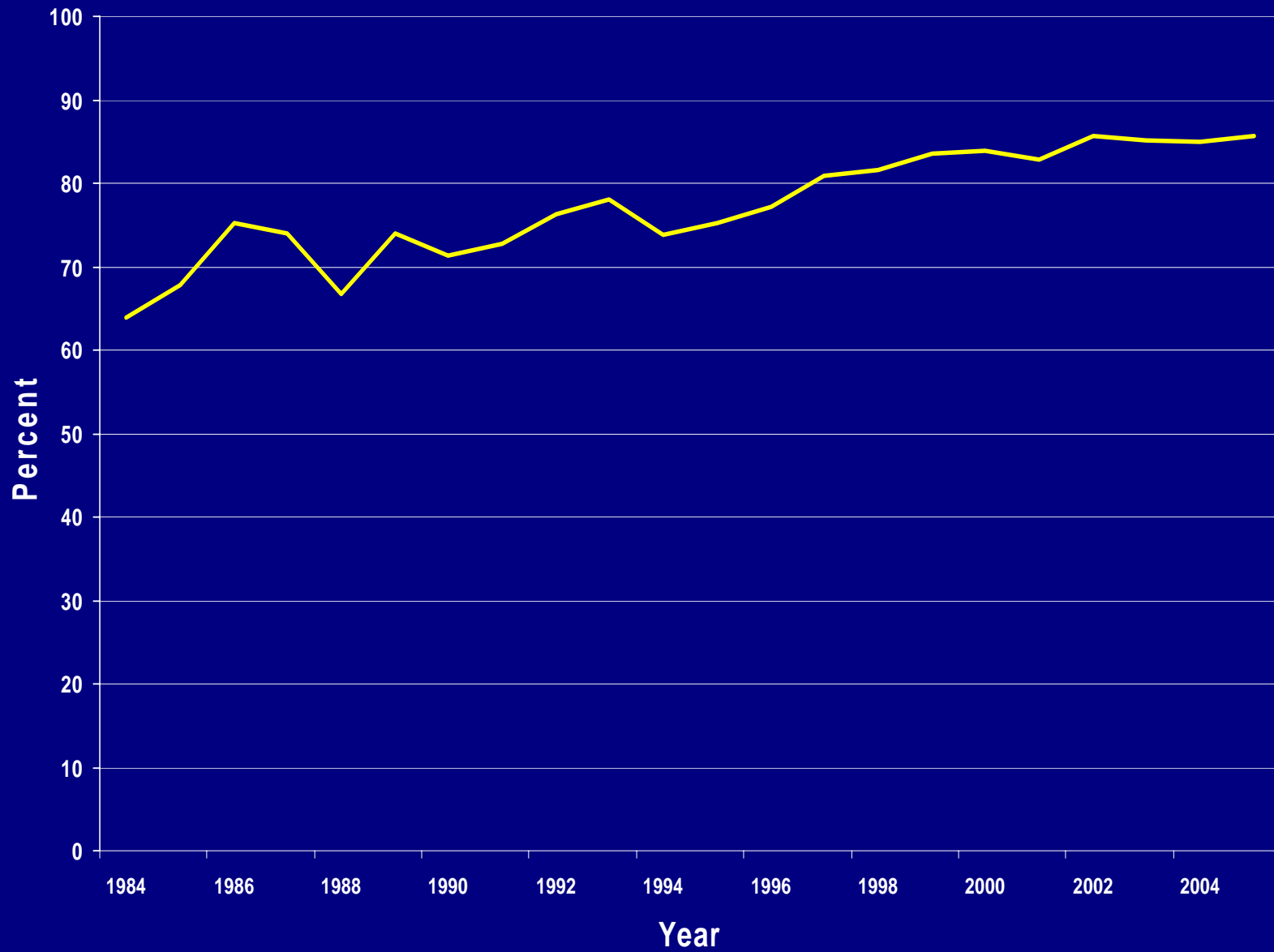
By set

- Location: latitude/longitude, depth
- Gear type: fixed, snap, auto, troll, handline
- Skate definition: length, spacing, hook size
- Skates hauled and lost
- Target species as defined by skipper
- Estimate of halibut retained and discarded over limit

Logbook Verification

- Interview process
 - Missing or unreadable elements
 - Check vessel number, gear type and definition, gear lost, location, pounds/numbers, targets
 - Record landed weight and compare to skippers estimates
- Latitude and longitude by GIS to areas

Percentage of commercial catch (weight) accounted for by logbook data



Commercial Data Verification

- Landing records match to license file
 - Vessel and permit numbers checked
- Landing records matched to logbook data
 - Log weight checked with landed weight
 - Reg. area from stat area from lat/long
 - Two-weeks to two-months are spent verifying and correcting commercial log/landing summary data

Biological Sampling

Dockside at time of offload

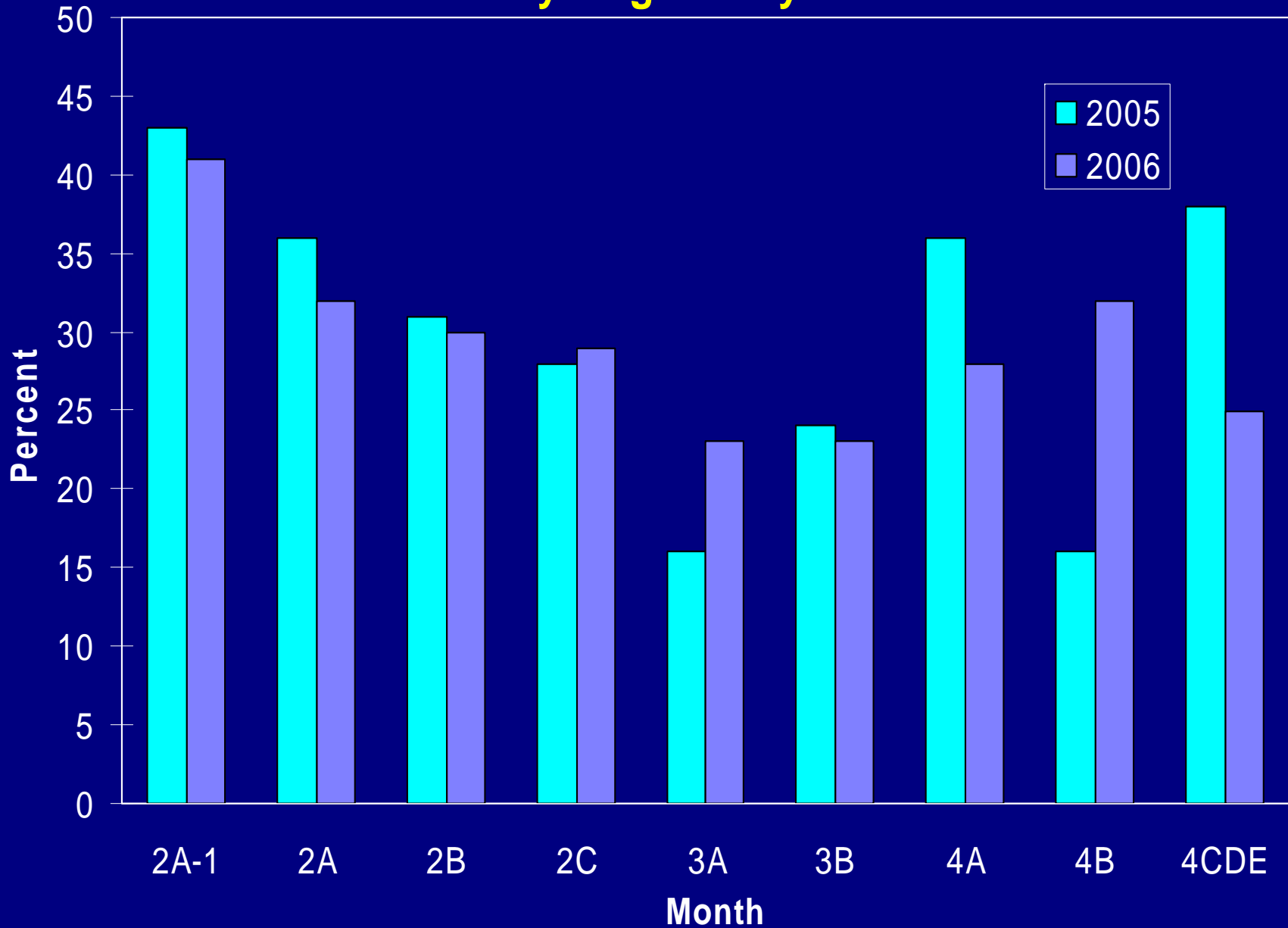
- Goal is representative sample of commercial catch
- Annual review of ports and sampling
 - Ports staffed to cover total landings into sampled port of 70 – 90% by reg. area
 - Defined sampling days and sampling rate by reg. area by port
 - Reg. area priorities by port
 - First month, each sampling method in each port reviewed by biometrician
 - Seattle staff visit ports twice/season



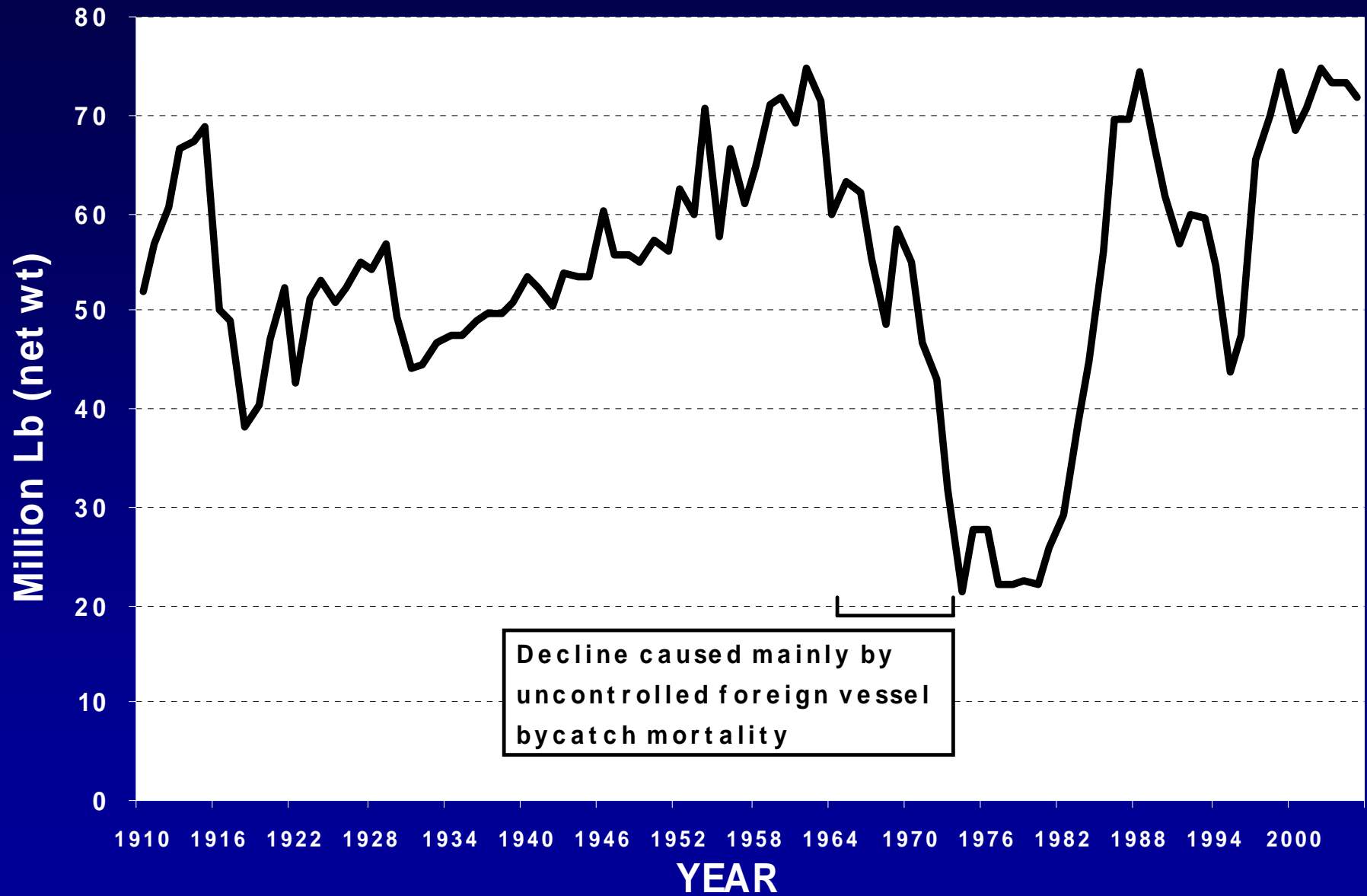
Biological Samples

- Goal of 1,500 samples per reg. area
- Fork length and otolith for each halibut
- 1996 – 2005
 - Between 12,000 to 18,000 otoliths aged
 - 7 to 15% aged twice with 82 to 92 % agreement (within 1 year)

Percent of Commercial catch (weight) Sampled by Regulatory Area



Commercial Halibut Catch 1910-2005



Wastage from Commercial Fishery

Legal-sized halibut mortality

- From lost or abandoned gear
- Logbook data provides effective skates lost to effective skates hauled
- Extrapolated to total catch by reg. area
- Last 5 years, ranged from 135,000 – 290,000 pounds coastwide

Wastage from Commercial Fishery

Sublegal-sized halibut mortality

- Use IPHC surveys catch rates
- Ratio from sublegal/legal-sized halibut of highest 1/3 of legal catch by weight by reg. area
- Discard mortality rate of 16% for quota fisheries and 25% for derby fisheries
- Last 5 years, ranged from 1.7 to 2.0 million pounds coastwide

