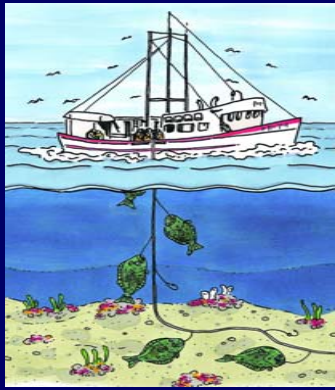


The 2007 Halibut Fishery

Heather L. Gilroy



Total Halibut Removals

Goal

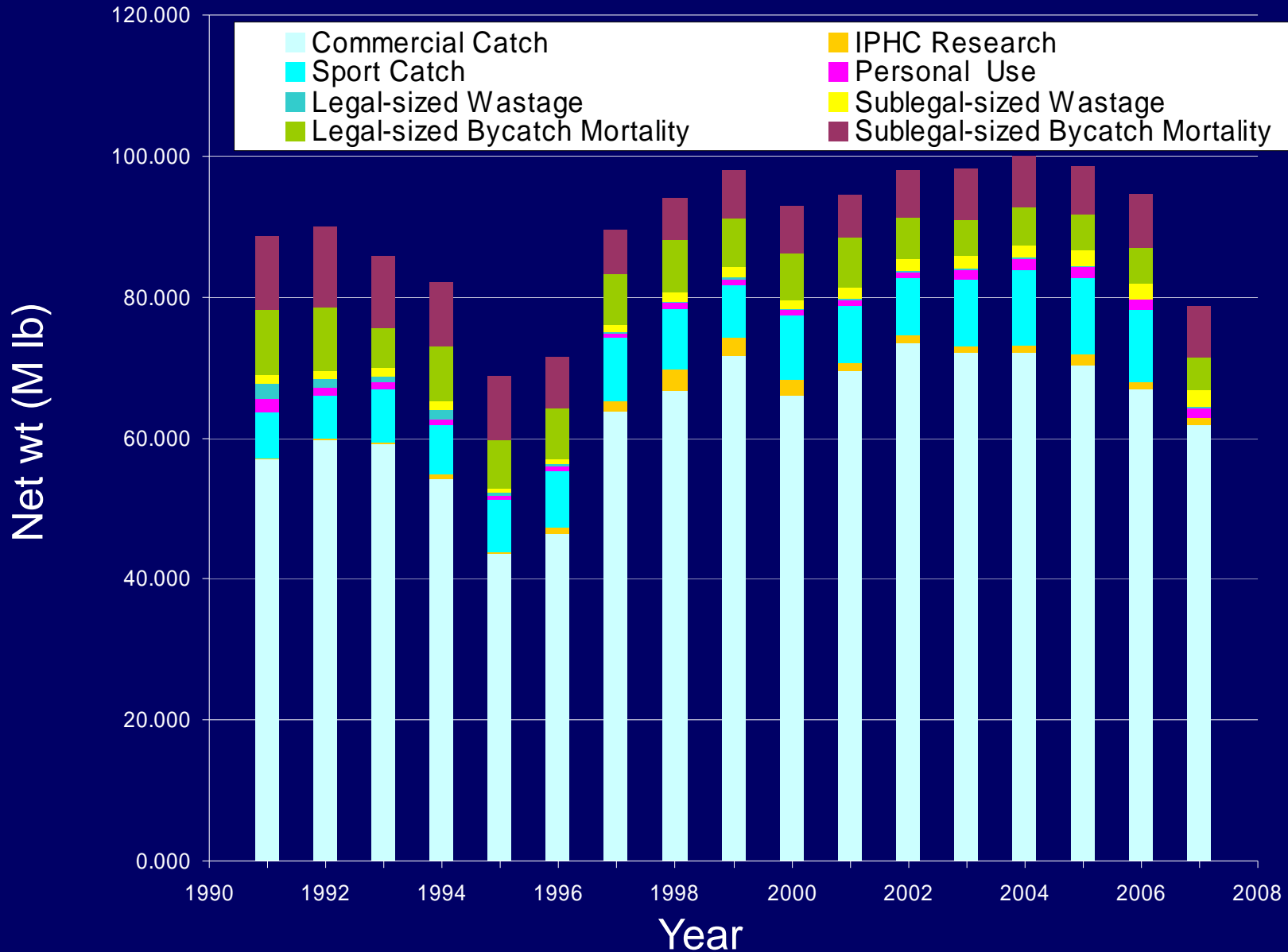
- Accurate accounting
 - by scale weights or scientifically-based estimates
 - necessary for stock assessment, allocation programs
- Improve estimates
- Work with other agencies for halibut data and bycatch in the halibut fishery



2007 Halibut Removals

• Commercial fleet	61,900,000 lbs
• Sport	8,170,000 lbs*
• Bycatch	12,100,000 lbs
• Wastage	2,400,000 lbs
• Personal use	1,500,000 lbs
• <u>IPHC research</u>	<u>900,000 lbs</u>
Total (*no B.C. sport)	86,980,000 lbs*

Total removals of halibut





Allocation by Governments

U.S. and Canadian allocation programs

- To individuals including quota shares
- To user groups
- Within management areas

Allocation by Governments

Area 2A (WA, OR, CA) catch sharing plan

- For all sport, commercial, Treaty Indian users
- Adopted by PFMC, implemented by NMFS
- 3 commercial fisheries, 9 sport sub-areas, treaty commercial and subsistence fisheries

Area 4CDE (Bering Sea) catch sharing plan

- IPHC sets one biologically-based catch limit
- Allocated to regulatory area by NPFMC
- Implemented by NMFS
- NMFS and IPHC regulations allow 4C quota share to be caught in 4C or 4D, and 4E to be caught in 4D

Allocation by Governments

Area 2B (British Columbia)

- Fourth year with allocation program
- IPHC adopts combined sport/commercial catch limit
- DFO allocates to sport and commercial
- Sport catch ceiling is 12% of combined catch limit

Allocation by Governments

Areas 2C and 3A

- Guideline Harvest Level (GHL) adopted for sport charter fishery
- Adopted by NPFMC in 2000
- Implemented by NMFS in 2003
- Sport charter harvest to decline with declining halibut abundance, by specified increments, and not to increase above the original GHL

2007 Commercial Fishery: Under/Over

<u>Area</u>	<u>Catch Limit</u>	<u>Expanded Catch Limit</u>
2A	- 5 %	N/A
2B	- 4 %	- 4 %
2C	- 2 %	- 5 %
3A	- 1 %	- 2 %
3B	0 %	- 1 %

2007 Commercial Fishery: Under/Over

<u>Area</u>	<u>Catch Limit</u>	<u>Expanded Catch Limit</u>
4A	- 4 %	-6 %
4B	- 4 %	- 7 %
4C	- 71 %	- 71 %
4D	+ 45 %	+ 42 %
4E	+ 58 %	+ 58 %
4CDE	- 7 %	- 8%

Integrated Fisheries Management: Area 2B



- Addresses rockfish conservation concerns and improved catch monitoring
- Second year of pilot
- All groundfish have individual quotas and transferability
- 100% at-sea and dockside monitoring
- Accountability for catch/discards

Commercial Fisheries: Area 2A (WA, OR, CA)



- Directed fishery
 - 4 openings
 - 2% under limit; 3,400 pounds available to incidental salmon
- Incidental with salmon
 - Closed with halibut fishery - Nov 15
 - 40% under catch limit
- Incidental with sablefish
 - Closed with sablefish fishery - Oct 31
 - 34% under catch limit
- Treaty Indian fishery
 - Inter-tribal allocation program
 - 1.5% over catch limit

Sport Catch Estimates: Area 2A

- Part of catch sharing plan
- In-season estimation
- Catch of 524,000 lbs
- Over allocation by 3%
 - WA: occurred into Sept. and extensive monitoring
 - OR coast: Central over limit, increased bag limit and exceptional weather



2007 Sport Activities: Area 2B (British Columbia)

- Jan. 2007 - IPHC staff recommended reduced bag limit for Area 2B. Commission did not adopt as DFO said action would be taken
- No DFO change in regulation in 2007
- DFO and IPHC reviewed estimation procedures
- New estimation procedure uses number of halibut and average weight by DFO area
- Improvement is use of average weights by DFO area, not using Southeast AK and WA

Sport Catch Estimates: Area 2B (British Columbia)

2006

- Final harvest estimate of 1.773 M lbs
- Above the allocation by 12% (0.184 M lbs)

2007

- ?



Sport Catch Estimates: Alaska

2007 projected estimate

- Projected estimate of 7.62 M lbs
- Revised methods of estimation to include projection models, statewide harvest survey, and linear trends with average weights

2006 final estimate

- Revised harvest estimate of 7.9 M lbs

2007 Sport Activities: GHL for 2C/3A for Charter Vessels

- Jan. 2007 - IPHC, with support of advisory bodies, adopted more restrictive daily bag limits for Areas 2C and 3A as NPFMC said they could not implement change before 2008
- U.S. government did not adopt regulation but did assure Commission that NMFS would take action for 2007
- NMFS restricted the Area 2C daily bag limit after June 1 to two fish, one of two fish under 32 inches
- ADF&G implemented no skipper or crew retention of halibut

Sport Catch Estimates: Alaska

GHL for Area 2C

- 1.432 M lbs for guided sport vessels
- 2007 estimate of 1.701 M lbs is 19% over GHL
- 2006 estimate of 1.804 M lbs is 26% over GHL

GHL for Area 3A

- 3.650 M lbs for guided sport vessels
- 2007 estimate of 3.404 M lbs is under GHL
- 2006 estimate of 3.664 M lbs is <1% over GHL

Wastage:

From Commercial Halibut Fishery

Legal-sized halibut

- Mortality of halibut from lost gear
- Under 0.4 M lbs since quota share program began

Sublegal-sized halibut

- Estimation of sublegal-size halibut from top 1/3 of IPHC survey stations
- Discard mortality rate
- 2.3 M lbs in 2007

Personal Use



All recognized by IPHC regulation:

- 2A Treaty ceremonial & subsistence
- Alaska subsistence
- Sublegal-sized halibut retained in Area 4D/4E
- DFO-sanctioned First Nation's food fish

Harvest estimate now updated yearly except for 2B First Nation's food fish

Alaska Subsistence

- For rural residents and federally recognized Native tribes
- For traditional and customary use
- IPHC regulations set season length
- NMFS regulations define specific requirements for fishery: number of hooks, daily limits, etc.
- Permitting by NMFS/RAM
- In 2006:
 - 14,306 SHARC holders
 - 1.13 M lbs

Joint Data Collection Programs OR, WA, B.C., SE Alaska

- IPHC collects rockfish biological data and hook information on IPHC surveys
- Paid for by state, federal, and PSMFC
- For stock assessment
- Continual improvements and expansion of programs

