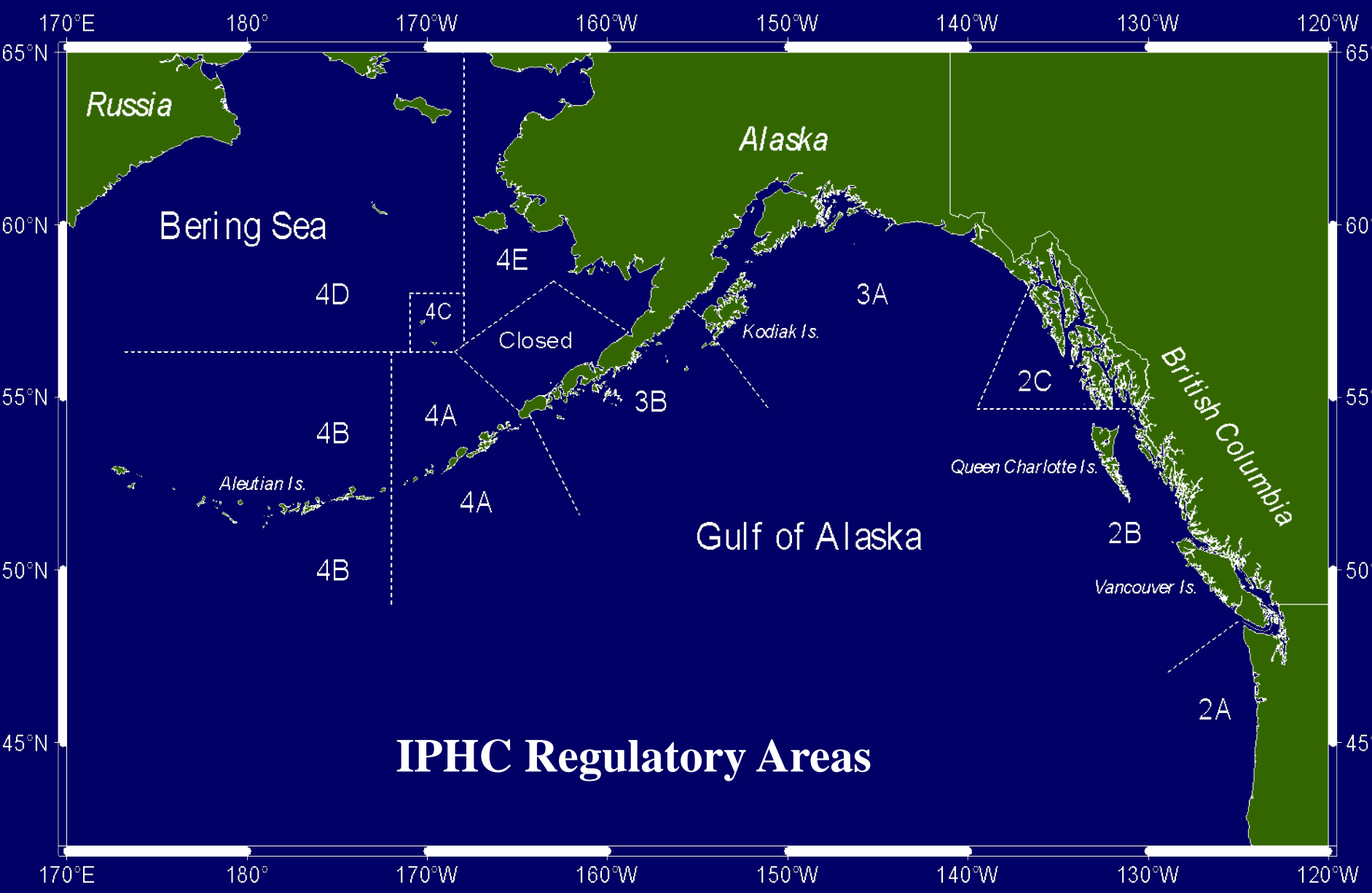


2008 IPHC Staff Regulatory Proposals

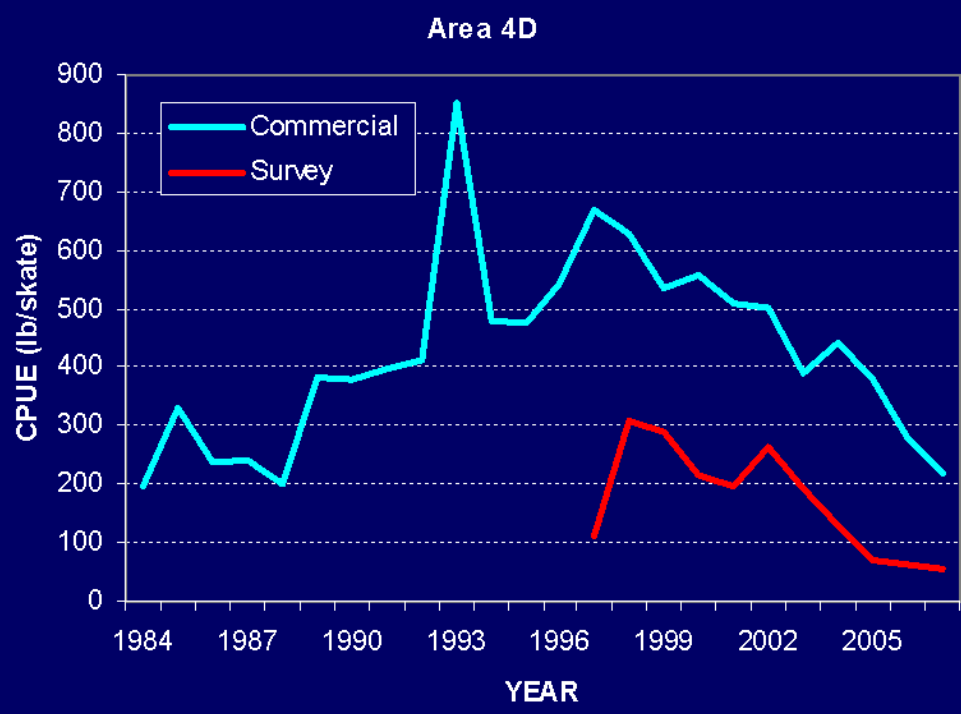
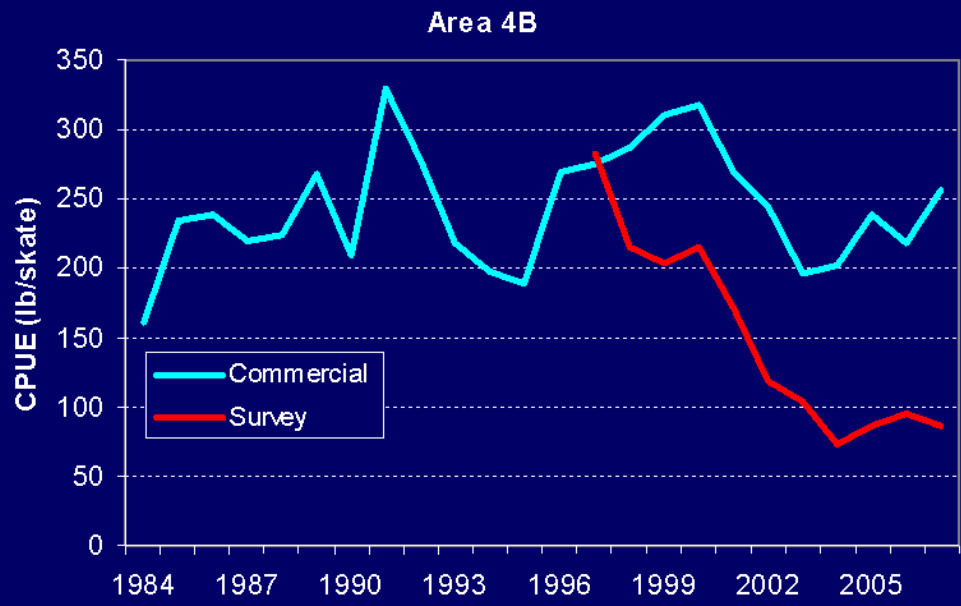
Bruce M. Leaman and Heather L. Gilroy



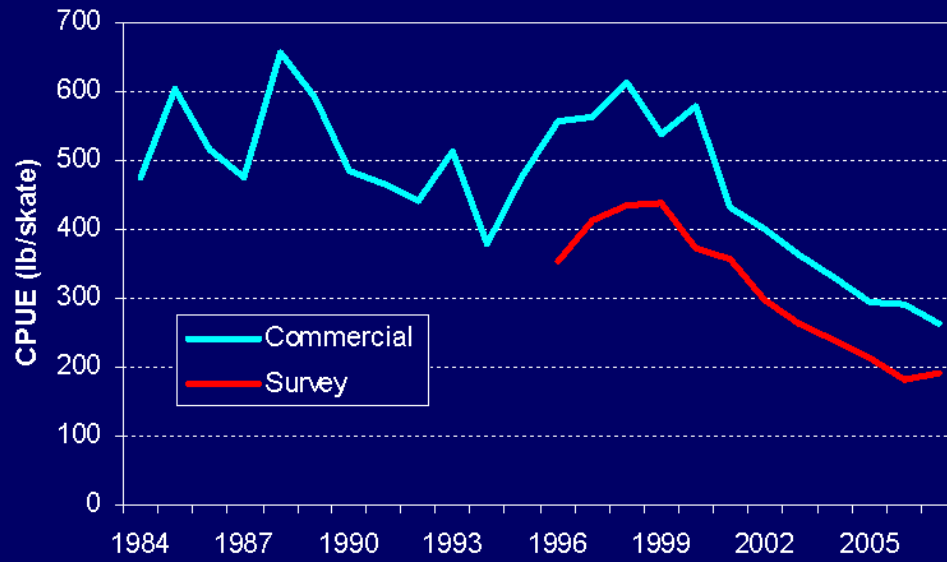
IPHC Regulatory Areas

Stock Condition Indicators

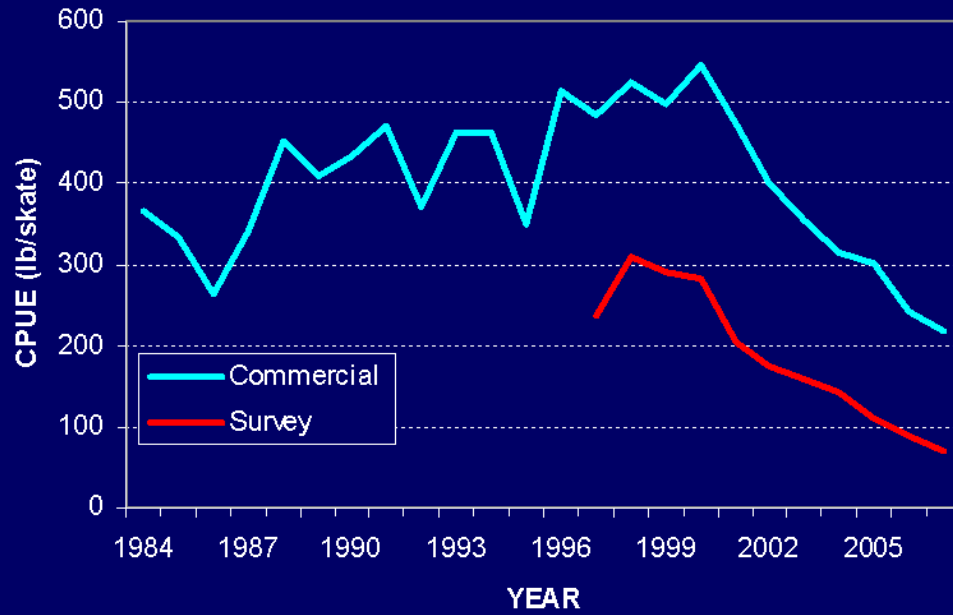
- **Analytic stock assessment**
- **Survey CPUE**
- **Commercial CPUE**



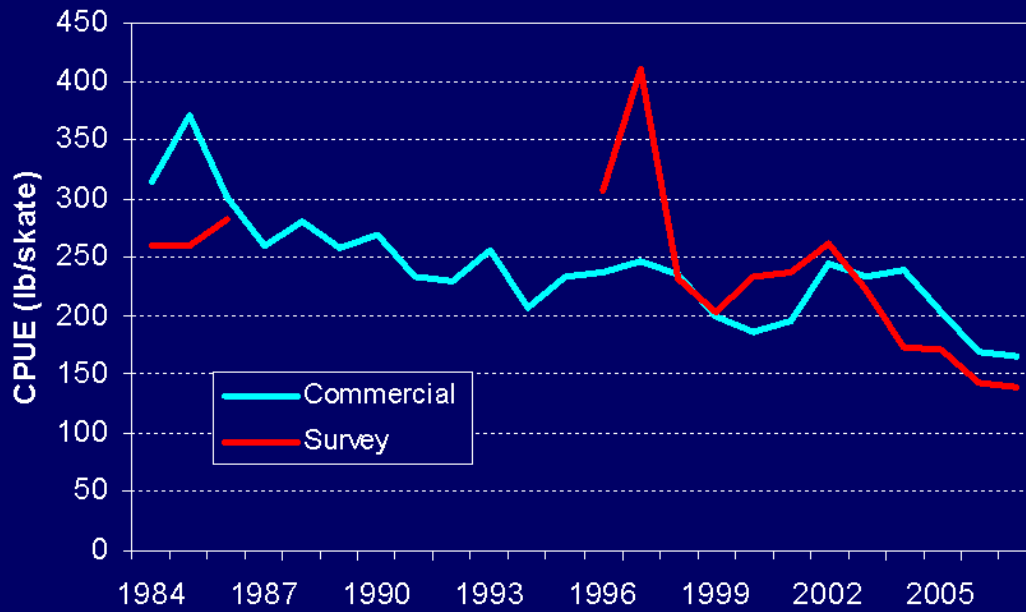
Area 3B



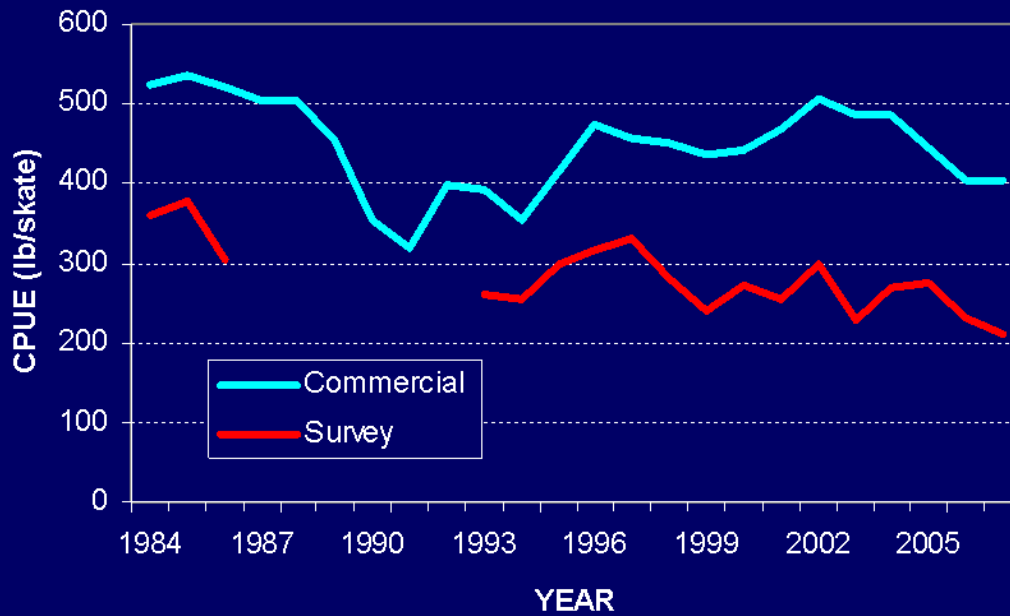
Area 4A



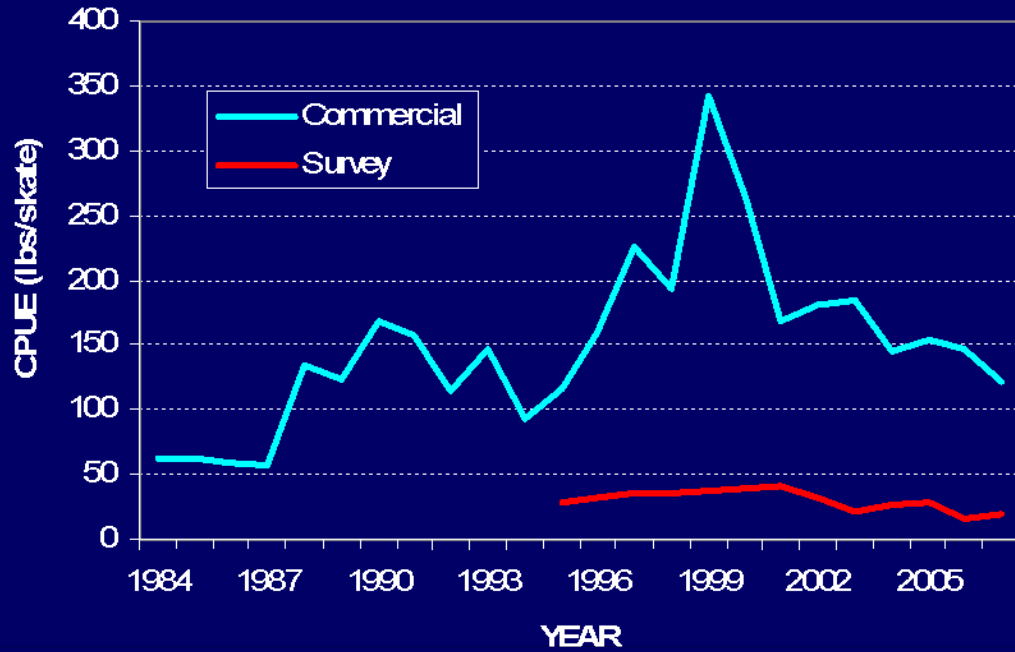
Area 2C



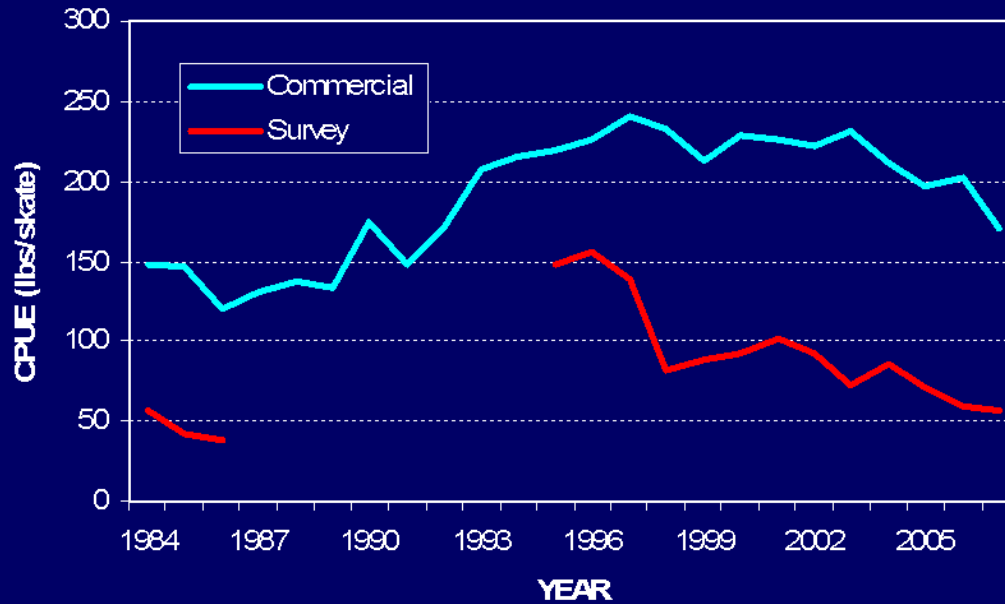
Area 3A



Area 2A



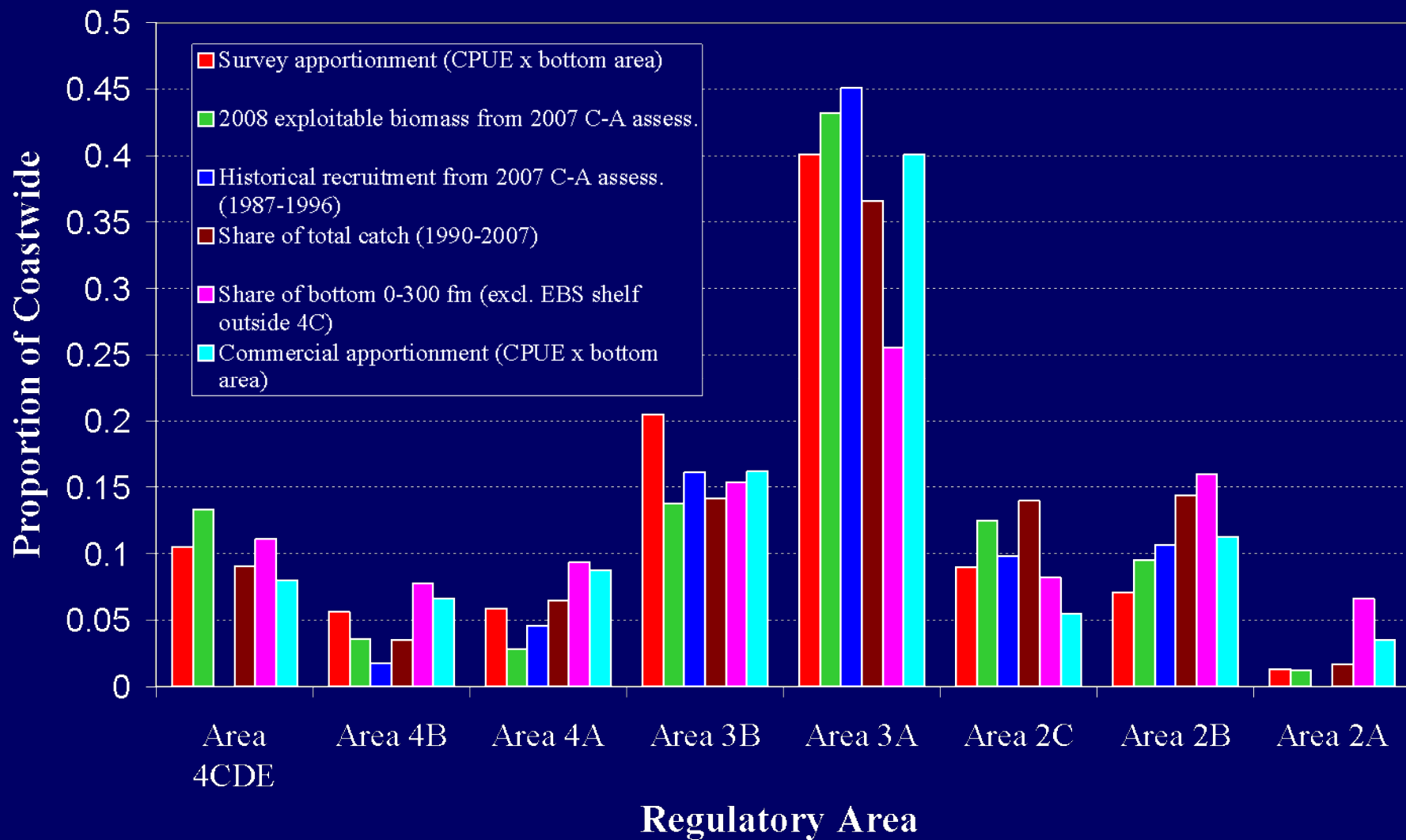
Area 2B



Catch Limit Concerns

- **Application of uniform harvest rate in Gulf of Alaska.**
- **Changes in Total CEY trigger decreases in recreational charter GHL in Area 2C.**
- **In Area 2B and 2C in 2007, sport fishery overruns of identified targets.**
- **Productivity and sustainability concerns for Area 4.**

Coastwide Apportionment



Catch Limits based on Coastwide Assessment, Sport Adheres to Limits

Reg Area	Exploitable biomass	Harvest Rate	Total CEY	2007 Other Removals	2008 Fishery CEY	2007 Catch Limit	2008 Catch Limit Recommendation	
2A	4.70	20.0%	0.94	0.29	0.65	1.34	1.00	1,4
2B	25.60	20.0%	5.12	0.47	4.65	11.47	8.06	2,4
2C	32.50	20.0%	6.50	2.59	3.92	8.51	6.21	4
3A	144.80	20.0%	28.96	6.71	22.25	26.20	24.22	4
3B	74.00	20.0%	14.80	0.53	14.27	9.22	10.90	3
4A	21.30	20.0%	4.26	0.75	3.51	2.89	3.10	3
4B	20.20	15.0%	3.03	0.33	2.70	1.44	1.86	3
4CDE	37.90	15.0%	5.69	2.01	3.68	4.10	3.89	4
Total	361.00	19.2%	69.30	13.68	55.62	65.17	59.24	

Note: Exploitable biomass is coastwide assessment, survey partitioning; amended 2C sport

¹ Catch limits and Fishery CEY for 2A includes commercial, sport, and treaty subsistence catches

² Catch limits and Fishery CEY for 2B includes commercial and sport catch

³ Calculated as 2007 catch limit plus 1/3 of the difference between
2008 Fishery CEY and 2007 Catch Limit

⁴ Calculated as 2007 Catch Limit minus 1/2 of the difference between
2008 Fishery CEY and 2007 Catch Limit

Assumes GHl of 0.931 MIb in 2C, 3.65 MIb in 3A under Other Removals; 2C based on regulated GHl reduction

Management Recommendations

Fishing periods and catch sharing

- Staff proposes March 15 - November 15 for quota share fisheries.
- Area 2A commercial and treaty Indian fisheries should fall within adopted season.
- In 2A, a series of 10-h periods for the directed fishery.
- Endorse Management Councils' catch sharing plans for Areas 2A and 4CDE.

Management Recommendations

Revise Area 2A vessel licence application requirement

- For Area 2A, IPHC staff recommends changing the requirement to allow the signature of the vessel owner or skipper on the licence application form.

Further define net weight in IPHC Regulations

- IPHC regulations currently define net weight as fish that is gutted, head-off, and without ice and slime. Staff recommends defining the conversion factors to be used if the halibut is weighed with the head-on and with ice and slime. The factors would be defined in regulation as a 10% deduction for head and 2% deduction for ice and slime.

Management Recommendations

Prohibit filleting of sport-caught fish on board the fishing vessel

- NOAA Enforcement (Alaska Division) has notified the IPHC, and IPHC staff agrees, that existing regulations allowing filleting of fish at sea prevent Enforcement officers from determining either the numbers or lengths of fish. The recommended change would allow for enforcement of any bag limit and maximum/minimum size regulations.

Management Recommendations

Additional acceptable logbook for U.S. commercial fishing vessel operators

- The IPHC staff has been working with Washington Department of Fish and Wildlife (WDFW) to modify their voluntary sablefish logbook to incorporate all needed data elements. If the logbook can be modified prior to suit IPHC data needs, the staff recommends allowing this WDFW logbook as an acceptable logbook for commercial halibut fisheries.