

# 2011 commercial fishery and regulation changes

Heather L. Gilroy, Lara M. Erikson, and Kirsten A. MacTavish

## Abstract

Represented in this document are the regulations and the results of the 2011 commercial Pacific halibut fishery. The total commercial catch of 38.5 million pounds was 3% under the International Pacific Halibut Commission (IPHC) set catch limit; in addition, 0.66 million pounds were landed from the IPHC stock assessment surveys. The commercial fisheries in Area 2A consisted of: the incidental halibut catch during the salmon troll fishery, the directed commercial fishery with fishing period limits, and the treaty Indian fisheries. Further north the commercial fisheries consisted of the Individual Vessel Quota fishery in Area 2B, the Individual Fishing Quota system in Alaska, and the Metlakatla fisheries in SE Alaska. All 2011 catch data presented in this document are preliminary.

## Regulatory areas for 2011

Boundary lines for the International Pacific Halibut Commission (IPHC) regulatory areas (Fig. 1) have remained the same since 1990. The southeastern flats in the Bering Sea, excluding the upper reaches of Bristol Bay, remained closed in 2011 to all commercial halibut fishing. A brief description of the regulatory areas and the Bering Sea closed area for the 2011 halibut fishery follows:

Area 2A - all waters off the coast of the States of California, Oregon, and Washington.

Area 2B - all waters off the coast of British Columbia.

Area 2C - all waters off the coast of Alaska, south and east of Cape Spencer.

Area 3A - all waters between Cape Spencer and Cape Trinity, Kodiak Island.

Area 3B - all waters between Cape Trinity and a line extending southeast from Cape Lutke, Unimak Island.

Area 4A - all waters west of Area 3B and the Bering Sea closed area that are south of 56°20' N and east of 172°00' W.

Area 4B - all waters in the Gulf of Alaska and the Bering Sea west of Area 4A and south of 56°20' N.

Area 4C - all waters in the Bering Sea north of Area 4A and the closed area that are east of longitude 171°00' W, south of 58°00' N, and west of 168°00' W.

Area 4D - all waters in the Bering Sea north of Areas 4A and 4B, north and west of Area 4C, and west of 168°00' W.

Area 4E - all waters in the Bering Sea north and east of the closed area, east of Areas 4C and 4D, and south of 65°34' N.

Closed area to commercial fishing - All waters in the Bering Sea north of 55°00'00'' N. latitude in Isanotski Strait that are enclosed by a line from Cape Sarichef Light (54°36'00'' N. latitude, 164°55'42'' W. longitude) to a point at 56°20'00'' N. latitude, 168°30'00'' W. longitude; thence to a point at 58°21'25'' N. latitude, 163°00'00'' W. longitude; thence to Strogonof Point (56°53'18''

N. latitude, 158°50'37'' W. longitude); and then along the northern coasts of the Alaska Peninsula and Unimak Island to the point of origin at Cape Sarichef Light are closed to halibut fishing and no person shall fish for halibut therein or have halibut in his/her possession while in those waters except in the course of a continuous transit across those waters. All waters in Isanotski Strait between 55°00'00'' N. latitude and 54°49'00'' N. latitude are closed to halibut fishing.

## **Changes to the regulations for 2011**

The regulations for the 2011 fishery were adopted at the Commission's 2011 Annual Meeting in Victoria, B.C., and were later approved by the Canadian and the United States governments, with one exception. Since 1999, the Canadian government has allowed the landing of live halibut caught in British Columbia waters by choosing not to approve the regulation that required commercially-caught halibut to have their gills and entrails removed before being offloaded from a vessel.

### **Seasons**

At the 2011 Annual Meeting, the Commission continued its discussions on season length and received recommendations to open the fishery on a Saturday to facilitate marketing. In addition, there was a discussion on the appropriate closing date with the processors preferring an early date (October 31) and the fishing industry preferring a later date than in previous years (November 15). The Canadian Individual Vessel Quota (IVQ) fishery in Area 2B and the United States Individual Fishing Quota (IFQ) and Community Development Quota (CDQ) fisheries in Areas 2C, 3A, 3B, 4A, 4B, 4C, 4D, and 4E commenced at 12 noon local time on March 12 and closed at 12 noon local time on November 18. The Area 2A commercial fisheries, including the treaty Indian commercial fisheries, were required to occur during the same calendar period (March 12 to November 18).

For Area 2A, seven 10-hour potential fishing periods for the non-treaty directed commercial fishery were adopted: June 29, July 13, July 27, August 10, August 24, September 7, and September 21, 2011. All fishing periods were to begin at 8:00 a.m. and end at 6:00 p.m. local time, were further restricted by fishing period limits, and would apply only until the commercial allocation was estimated to have been reached.

### **Catch limits and licensing**

The Commission adopts biologically-based catch limits for all individual regulatory areas and for Areas 4CDE combined (Tables 1 - 3). Catch limit, as referred to here, is the IPHC catch limit set by the Commissioners at the Annual Meeting. The adjusted catch limit represents the IPHC catch limit with adjustments from the underage and overage programs from the previous year's quota share program, and in Area 2B, it also includes relinquishment of quota and quota leasing programs between sectors. The individual catch limits adopted for Regulatory Areas 4C, 4D, and 4E are determined by the Catch Sharing Plan (CSP) implemented by the North Pacific Fishery Management Council (NPFMC). This CSP and IPHC regulations allowed Area 4D CDQ to be harvested in Area 4E, and Area 4C IFQ and CDQ to be harvested in Areas 4C or 4D.

The Commission determines the total allowable catch for all user groups in Area 2A, and the Pacific Fishery Management Council (PFMC) allocates halibut catch limits among user groups through a CSP. The PFMC CSP stated that a primary limited-entry longline sablefish (*Anoplopoma fimbria*) fishery north of Point Chehalis, WA (46°53'18"N) would be allocated to part of the Washington sport allocation poundage, provided that the Area 2A total catch limit was

over 900,000 pounds and the amount available to the incidental fishery was over 10,000 pounds. Because the amount available for the incidental fishery did not exceed the 10,000-pound threshold, there was no incidental halibut fishery during the limited-entry sablefish fishery. The Area 2A fisheries included: two treaty Indian fisheries, a ceremonial and subsistence use fishery with a catch limit of 25,300 pounds, and a commercial fishery with a catch limit of 293,200 pounds; two non-treaty commercial fisheries with 159,380 pounds allocated to the directed fishery and 28,126 pounds to the incidental halibut fishery during the salmon troll season; and two sport fishery catch limits (Williams 2012). The total 2011 Area 2A catch of 946,000 pounds was over the catch limit (910,000 pound) by 4% (Table 1).

The 2011 IPHC licensing regulations remained the same as in 2010. All Area 2A harvesters had to choose between a commercial or sport charter vessel license, with the commercial license applications having deadline dates. Further, commercial harvesters had to choose between a license for retaining halibut caught incidentally during the salmon troll fishery or fishing in the directed commercial halibut fishery (south of Point Chehalis, WA). However, the IPHC license requirements stipulated that persons fishing in Subarea 2A-1 as members of U.S. treaty Indian tribes were not required to have an IPHC vessel license. The tribal fisheries had their own licensing requirements that made the IPHC license redundant.

The IPHC adopted an Area 2B combined sport and commercial catch limit of 7,650,000 pounds that was allocated to the user groups by the Canadian Department of Fisheries and Oceans (DFO) (Table 2). An additional 248,000 pounds was added to include the projected commercial wastage from halibut over 26 inches, resulting in a total catch limit of 7,898,000 pounds. The commercial fleet allocation of 88% of the total catch limit (6,950,240 pounds) was reduced by 248,000 pounds to account for wastage, resulting in an allocation of 6,702,240 pounds. In 2011, additional adjustments were made by DFO which included pounds available from the underage/overage plan, pounds leased to sport sector in experimental fishing program, and quota held by DFO for First Nations through a relinquishment process. The sport fishery total catch of 1,220,000 pounds exceeded the 947,800-pound allocation and is discussed in Williams (2011); the commercial fishery is discussed below. The total Area 2B catch of 7.7 million pounds was within 1% of the combined total catch limit (7.65 million pounds).

### **Other regulatory measures**

The Commission eliminated the use of LORAN-C coordinates as a position option in fishing logbooks, because the LORAN system has been decommissioned.

### ***Control of Charter Harvest in Area 2C***

The catch of halibut in sport fisheries and the enforcement of domestic allocation limits, particularly for charter vessels, were discussed at length at the Annual Meeting. The Commission recognized that U.S. agencies wish to adhere to domestic allocation limits and that effective controls will be implemented through a CSP. However, it was noted that the CSP for Area 2C fisheries will not be implemented until at least 2012. Therefore, the Commission recommended regulatory action designed to restrict charter harvest of halibut in Area 2C to the Guideline Harvest Level approved by the North Pacific Fishery Management Council. The Commission supported the continuation of a U.S. National Marine Fisheries Service (NMFS) regulation of a one-fish daily bag limit and approved an additional IPHC regulation that the retained fish must be no larger than 37 inches (fork length). After careful consideration and consultation, the U.S. government accepted

the Commission's additional regulation. For enforcement purposes, the NMFS regulation went into effect to require that the fish's frame (i.e., fully connected head, spine and tail) be retained until landing, if the halibut were legally filleted at sea.

## Commercial catch and fishery landing patterns

Commercial catch and catch limits by regulatory area for 2002 through 2011 are shown in Table 3, and the 2011 fishing season, catch, and catch limits are shown in Table 4. The following paragraphs review commercial catch, seasons, and trends for each area. The data sources were the International Pacific Halibut Commission, NMFS, DFO, Washington treaty Indian tribal fisheries management departments including the Northwest Indian Fisheries Commission, Makah, Lummi, Jamestown, Swinomish, and Quinault Indian tribes, and state agencies including Washington Department of Fish and Wildlife (WDFW) and Oregon Department of Fish and Wildlife (ODFW).

### Area 2A

The IPHC licensed sport charter and commercial vessels in Area 2A. In 2011, the IPHC issued 604 Area 2A vessel licenses: 316 licenses for the incidental commercial catch of halibut during the salmon troll fishery, 147 for the directed commercial fishery, and 141 for the sport charter fishery. The number of licenses issued for the sport charter fishery was similar to last year, the number of licenses issued for the incidental catch during the salmon troll fishery increased by 83, and the number issued for the directed commercial fishery decreased by 45 from 2010 numbers. The increased number of licenses for the incidental halibut in the salmon troll fishery is due to the PFMC's decision to allow commercial chinook (*Oncorhynchus tshawytscha*) fishing in all areas of California and Oregon for the first time in three years. Contributing factors to the decrease in the number of directed commercial licenses were the opening of a coastwide salmon troll fishery, the lower catch limit, and the closure of the incidental halibut fishery during the sablefish fishery.

In the incidental commercial halibut fishery during the salmon troll fishery, the allowable incidental catch ratio was one halibut per three chinook, plus an "extra" halibut per landing. However, the total number of incidental halibut per vessel per landing could not exceed 35. The 1:3 ratio of halibut to chinook was the same as the one used in 2010 and is more conservative than the 2008 and 2009 ratio of 1:2. The more conservative ratio was intended to ensure a longer opportunity to land incidentally caught halibut because of the lower halibut catch limit and the Area 2A coastwide chinook salmon troll fishing opportunity. The incidental commercial halibut fishery during the salmon troll season opened on May 1 and was initially closed on May 28, when it was estimated that the catch limit of 28,126 pounds was taken. Upon further evaluation of landing data, it was determined that 2,598 pounds remained in the catch limit; therefore, the fishery was reopened on July 29 with additional restrictions. Landings were limited to one halibut per seven consecutive days (Friday through Thursday). Additionally, the ODFW instated a call-in requirement to monitor landings in a timely manner. When the salmon troll fisheries closed on October 31, the incidental halibut catch (25,900 pounds) during the salmon troll season was 8% under the catch limit.

The directed commercial fishery consisted of two 10-hour fishing periods with fishing period limits (Table 5). The fishing period limits were assigned by vessel class; the H-class vessels received 10,000 pounds for the June 29 opening and 5,000 pounds for the July 13 opening. The total directed commercial catch (168,000 pounds) was 5.4%, or 8,620 pounds over the catch limit.

In Area 2A-1 the treaty Indian tribes managed the commercial catch by allocating 75% to an open access fishery and 25% to a restricted fishery with daily and vessel limits. Both the unrestricted and restricted fisheries consisted of two fishing periods each, and the restricted fishery included vessel per day limits of 500 pounds. The total treaty Indian commercial catch was 328,900 pounds, or 12% over the catch limit (293,200 pounds).

### **Area 2C Metlakatla fishery**

The Metlakatla Indian Community was authorized by the United States government to conduct a commercial halibut fishery within the Annette Islands Reserve. There were thirteen 2-day openings between April 15 and October 2 for a total catch of almost 62,000 pounds (Table 6). This was 17,000 pounds higher than the 2010 catch, and within the historical catch range that has varied over time from a low of 12,000 pounds in 1998 to a high of 126,000 pounds in 1996.

### **The Quota Share fisheries**

The Quota Share (QS) fisheries of British Columbia (Area 2B) and Alaska (Areas 2C, 3, and 4) were open from March 12 to November 18. The following section discusses the fisheries by area.

#### ***Area 2B***

Each vessel was allocated a fixed poundage of halibut, or an IVQ, as calculated by DFO. In 1991, when the halibut IVQ program was implemented, 435 vessels received IVQs. Each initial IVQ was split into two shares called blocks. Numerous changes have been made since then, including first allowing temporary block transfers (1993) and then permanent block and IVQ transfers (1999). Since 1999, the number of active vessels with halibut licenses (L licenses), and First Nations communal commercial licenses (FL licenses), has decreased from a high of 257 (in 1999) to a low of 148 (in 2011). However, halibut was landed from a total of 217 active licenses in 2011, sixty-nine of which were from other fisheries.

The Groundfish Integrated Fisheries Management Plan (IFMP) has been in effect in British Columbia since 2006. The IFMP, initially a three-year pilot program, was implemented to meet conservation needs, including addressing rockfish conservation concerns and improving catch monitoring. The IFMP was reviewed and approved by DFO in January 2010. The IFMP includes quota shares for all hook and line groundfish fisheries, transferability with limits between license holders, 100% at-sea and dockside monitoring, and vessel accountability for all catch, both landed and discarded. There is 100% monitoring through logbook recordings, video camera coverage, and dockside coverage.

The commercial catch of 6,480,000 pounds for Area 2B was 3% under the catch limit.

#### ***Alaska***

The IFQ halibut and sablefish fisheries have been in effect in Alaska since 1995. NMFS Restricted Access Management (RAM) allocated halibut QS to recipients by IPHC Regulatory Area. Quota share transfers were permitted with restrictions on the amount of QS a person could hold and the amount that could be fished per vessel. As of August 26, 2011, RAM reported that 2,740 persons held quota shares, down from the initial 4,831 persons at the start of the program.

The total 2011 catch from the IFQ/CDQ halibut fishery for the waters off Alaska was 31,520,000 pounds, 3% under the catch limit. For comparison, the 2010 commercial catch was 1% under the

catch limit. For Area 2C, the commercial QS catch was over the catch limit by less than 1% and still within the adjusted catch limit. For Areas 3A and 3B, the commercial QS catches were within the catch limits by 1% and 3%, respectively. For Areas 4A, 4B, and 4CDE, the catches were within 6%, 8%, and 8% of the catch limit, respectively. One notable change was that the Area 4B 2011 catch was closer to the catch limit than in 2010 when the catch was 17% under the catch limit. As mentioned previously, the NPFMC CSP allowed Area 4D CDQ to be harvested in Area 4E and Area 4C IFQ and CDQ to be fished in Areas 4C or 4D. These two regulations were the reason the catches in Areas 4D and 4E exceeded the catch limits. The total commercial catch of 3,414,000 pounds in Areas 4CDE was under the combined Area 4CDE catch limit (3,720,000 pounds).

## **Landing patterns and highlights**

Homer and Kodiak each received approximately 17 to 18% of the commercial Alaskan catch. This was a change from the last few years as Homer has received substantially more pounds than Kodiak, for example, in 2010 Homer and Kodiak received 25% and 14%, respectively. Seward (11%) received the third largest landing volumes of the Alaskan commercial catch. In SE Alaska, Sitka received 1,291,000 pounds (4%), Juneau 1,069,000 pounds (3%), and Petersburg 919,000 pounds (3%). The Alaskan QS catch that was landed outside of Alaska was 1.9%.

Commercial trips from Area 2B were delivered into 10 different ports in 2011. The ports of Port Hardy (including Coal Harbour and Port McNeill), Prince Rupert/Port Edward, and Vancouver were the major landing locations, receiving 91% of the Area 2B commercial catch. Port Hardy received over 3,004,500 pounds of halibut or 46% of the Area 2B commercial catch. Prince Rupert/Port Edward (38%) and Vancouver (7%) received the second and third largest landing volumes of the Area 2B commercial catch. All of the IVQ catch was landed in Area 2B.

The 2011 QS fishery landings were spread over nine months of the year (Table 7). On a month-to-month comparison, May was again the busiest month for total poundage (18%) from Alaska. March and August were the busiest months for poundage delivered in British Columbia with approximately 16% of the catch during each month. Average landing dates in British Columbia occurred later this year as 49% of the Area 2B catch was landed by the end of May in 2010, and only 38% was landed by the end of May in 2011.

The landing of live halibut from Area 2B was legally allowed by DFO and resulted in a total landing weight of 1,026 pounds, a new low for landings of live halibut since live landings began in 1999. Live fish landings have ranged from a high of 103,000 pounds in 1999 to a low of 1,026 pounds in 2011.

## **References**

Williams, G.H. 2012. 2011 Halibut sport fishery review. Int. Pac. Halibut Comm. Report of Assessment and Research Activities 2011: 45-52.

**Table 1. The Area 2A 2011 catch limits allocated by the Pacific Fishery Management Council Catch Sharing Plan and preliminary catch estimates (net weight).**

<b>Area</b>	<b>Catch Limit</b>	<b>Catch Estimate</b>
Non-treaty directed commercial	159,380	168,000
Non-treaty incidental commercial during salmon troll fishery	28,126	25,500
Treaty Indian commercial	293,200	328,916
Treaty Indian ceremonial and subsistence	25,300	25,300
Sport – Washington	216,489	214,653
Sport – Oregon/California	187,506	183,226
<b>Total allocation</b>	<b>910,000</b>	<b>945,595</b>
IPHC research catch		17,500
<b>Total</b>	<b>910,000</b>	<b>963,095</b>

**Table 2. The 2011 Area 2B catch limits as allocated by the Canadian Department of Fisheries and Oceans and estimated catches (thousands of pounds, net weight).**

<b>Fishery</b>	<b>Allocation</b>	<b>Catch Estimate<sup>1</sup></b>
Commercial fishery	6,702.2	6,480.0
Sport fishery <sup>2</sup>	947.8	1,220.0
<b>Total allocation/catch</b>	<b>7,650.0</b>	<b>7,700.0</b>
IPHC research catch		80.0
<b>Total</b>	<b>7,650.0<sup>3</sup></b>	<b>7,780.0</b>

<sup>1</sup> Preliminary

<sup>2</sup> An experimental permit program was implemented in 2011 which allowed sport operators to lease quota from commercial operators. Details on the amount leased were not available at time of writing.

<sup>3</sup> Adjustments totaling -51,687 pounds were made to the commercial fishery catch limit which included carryover from the previous year's underage/overage plan and quota held by DFO for First Nations through relinquishment processes.

**Table 3. Commercial catch (including IPHC research catch) and catch limits of Pacific halibut (in thousands of pounds, net weight) by IPHC regulatory area, 2001 - 2011.**

Regulatory Area	Commercial Catch <sup>1</sup>										
	2002	2003	2004	2005	2006	2007	2008	2009	2010 <sup>2</sup>	2011 <sup>3</sup>	
2A <sup>4</sup>	851	819	884	803	829	789	682	490	418	540	
2B	12,074	11,789	12,162	12,331	12,005	9,772	7,756	6,637	6,729	6,560	
2C	8,602	8,410	10,233	10,625	10,492	8,473	6,206	4,955	4,486	2,431	
3A	23,131	22,748	25,168	26,033	25,714	26,493	24,521	21,755	20,502	14,533	
3B	17,313	17,231	15,460	13,171	10,792	9,249	10,748	10,781	10,114	7,351	
4A	5,091	5,024	3,562	3,404	3,332	2,828	3,015	2,528	2,325	2,313	
4B	4,080	3,863	2,719	1,975	1,590	1,416	1,763	1,593	1,829	2,030	
4C <sup>5</sup>	1,210	886	954	534	493	551	724	645	789	792	
4D <sup>5,6</sup>	1,753	1,956	1,655	2,578	2,368	2,720	2,552	2,210	2,116	2,179	
4E <sup>6</sup>	555	415	314	369	366 <sup>7</sup>	579	600	455	410	458	
Total	74,660	73,141	73,111	71,823	67,981	62,870	58,567	52,049	49,718	39,187	
Regulatory Area	Commercial Catch Limits <sup>8</sup>										
	2002	2003	2004	2005	2006	2007	2008	2009	2010	2011	
2A <sup>4</sup>	817.9	817.9	890.4	788.6	818.5	799.2	718.4	511.2	420.0	481	
2B	11,750	11,750	12,141	11,658	11,631	10,089.4	7,918	6,711.6	6,598.6	6,702	
2C	8,500	8,500	10,500	10,930	10,630	8,510.0	6,210.0	5,020.0	4,400	2,330	
3A	22,630	22,630	25,060	25,470	25,200	26,200.0	24,220.0	21,700.0	19,990	14,360	
3B	17,130	17,130	15,600	13,150	10,860	9,220.0	10,900.0	10,900.0	9,900	7,510	
4A	4,970	4,970	3,470	3,440	3,350	2,890.0	3,100.0	2,550.0	2,330	2,410	
4B	4,180	4,180	2,810	2,260	1,670	1,440.0	1,860.0	1,870.0	2,160	2,180	
4C	2,030	2,030	1,720	1,815	1,610	1,866.5	1,769.0	1,569.0	1,625	1,690	
4D	2,030	2,030	1,720	1,815	1,610	1,866.5	1,769.0	1,569.0	1,625	1,690	
4E	390	390	345	359	330	367.0	352.0	322.0	330	340	
Total	74,427.9	74,427.9	74,256.4	71,685.6	67,709.5	63,248.6	58,816.4	52,722.8	49,378.6	39,693	

<sup>1</sup> Commercial catch includes IPHC research catch and, in Area 2C, the Metlakatla fishery catch.

<sup>2</sup> Poundage figures have been updated from previous publications.

<sup>3</sup> Preliminary.

<sup>4</sup> Does not include treaty Indian ceremonial and subsistence fish.

<sup>5</sup> Area 4C IFQ and CDQ could be fished in Area 4D (since 2005).

<sup>6</sup> Area 4D CDQ could be fished in Area 4E by NOAA enforcement waiver (since 2001) and IFQ regulation (since 2002).

<sup>7</sup> Area 4E includes research catch in the IPHC Closed Area.

<sup>8</sup> Additional carryover from the underage/overage plans is not included.

**Table 4. Commercial fishing periods, number of fishing days, catch limit, commercial, research and total catch (thousands of pounds, net weight) by regulatory area for the 2011 Pacific halibut commercial fishery (preliminary, November 14, 2011).**

Area 2A	Fishing Period	Catch Limit	No. of Days	Commercial Catch	Research Catch	Total Catch
Treaty Indian	Unrestricted: 3/20 – 22 5/1 – 2 Restricted: 3/12-19, 3/24-28		48-hours 19-hours  13 days	148.6 116.9  <u>63.4</u> 328.9		265.5   <u>63.4</u> 328.9
<b>Total</b>		293.2				
<u>Commercial</u> Incidental in Salmon Fishery Total	5/1 – 5/28 7/29 – 10/31	28.1	28 days 95 days	25.5 <u>0.4</u> 25.9		25.9
Directed <sup>1</sup>	6/29 7/13		10-hours 10-hours	99.0 <u>69.0</u>		
Directed Total		159.4		168.0		168.0
<b>2A Total</b>		480.7		522.8	17.5	540.3
Area	Fishing Period	Catch Limit	Adjusted Catch Limit <sup>2</sup>	Commercial Catch	Research Catch	Total Catch
2B	3/12 – 11/18	6,702.2	6,651.0	6,480.0 <sup>3</sup>	80.0	6,560.0
2C	3/12 – 11/18	2,330.0	2,407.0	2,340.0 <sup>4</sup>	91.0	2,431.0
3A	3/12 – 11/18	14,360.0	14,505.0	14,242.0	291.0	14,533.0
3B	3/12 – 11/18	7,510.0	7,615.0	7,249.0	102.0	7,351.0
4A	3/12 – 11/18	2,410.0	2,450.0	2,277.0	36.0	2,313.0
4B	3/12 – 11/18	2,180.0	2,268.0	1,998.0	32.0	2,030.0
4C	3/12 – 11/18	1,690.0	1,723.0	787.0 <sup>5</sup>	5.0	792.0
4D	3/12 – 11/18	1,690.0	1,715.0	2,169.0 <sup>5,6</sup>	10.0	2,179.0
4E	3/12 – 11/18	340.0	340.0	458.0 <sup>6</sup>	0.0	458.0
Alaska Total		32,510.0	33,023.0	31,520.0	567.0	32,087.0
<b>Grand Total</b>		39,692.9	40,154.7 <sup>7</sup>	38,522.8	664.5	39,187.3

<sup>1</sup> Fishing period limits by vessel class.

<sup>2</sup> Includes adjustments from the underage/overage programs. Additionally, in 2B, quota held by DFO for First Nations through relinquishment processes are included.

<sup>3</sup> Includes the pounds that were landed by Native communal commercial licenses (FL licenses).

<sup>4</sup> Includes the pounds taken in the Metlakatla fishery within the Annette Island Reserve.

<sup>5</sup> Area 4C IFQ and CDQ could be fished in Area 4D by NMFS and IPHC regulations.

<sup>6</sup> Area 4D CDQ could be fished in Area 4E by NMFS and IPHC regulations.

<sup>7</sup> Includes Area 2A catch limit.

**Table 5. The fishing period limit (pounds, net weight) by vessel class used in the 2011 directed commercial fishery in Area 2A.**

Vessel Class		Fishing Period & Limits	
Letter	Feet	June 29	July 13
A	0-25	840	420
B	26-30	1,050	525
C	31-35	1,680	840
D	36-40	4,630	2,315
E	42-45	4,980	2,490
F	46-50	5,960	2,980
G	51-55	6,650	3,325
H	56+	10,000	5,000

**Table 6. Metlakatla community fishing periods, number of vessels, and preliminary halibut catch (net weight), 2011.**

Fishing Period Dates	Number of Vessels	Catch (Pounds)
April 15 - 17	8	4,259
April 30 – May 1	9	3,881
May 13 – 15	12	5,181
May 27 – 29	16	10,643
June 10 – 12	14	5,157
June 24 –26	11	5,225
July 8 – 10	8	3,828
July 22 – 24	7	2,039
August 5 – 7	9	4,205
August 19 – 21	6	2,633
September 2 – 4	9	5,578
September 16 – 18	11	5,443
September 30 – October 2	7	3,875
13 Fishing Periods		61,947

**Table 7. The total pounds (thousands, net weight, preliminary) of 2011 commercial landings (not including research catch) of Pacific halibut for Alaska and British Columbia by regulatory area and month.**

Regulatory Area	March	April	May	June	July	Aug.	Sept.	Oct.	Nov.	Total
2B <sup>1</sup>	1,046	771	622	480	713	1,020	453	993	382	6,480
2C2	329	349	468	313	164	276	242	160	39	2,340
3A <sup>2</sup>	1,656	2,008	2,930	2,054	1,358	1,547	1,531	991	167	14,242
3B <sup>2</sup>	134	382	1,367	1,379	956	1,524	860	586	61	7,249
4A <sup>2</sup>		58 <sup>3</sup>	395	257	306	737	268	256 <sup>4</sup>		2,277
4B <sup>2</sup>		74 <sup>3</sup>	348	333	425	332	307	179 <sup>4</sup>		1,998
4CDE <sup>2</sup>			319	757	823	582	405	453	75	3,414
Alaska Total	2,119	2,871	5,827	5,093	4,032	4,998	3,613	2,625	342	31,520
Total	3,165	3,642	6,449	5,573	4,745	6,018	4,066	3,618	724	38,000

<sup>1</sup> Based on landing ratios from DFO website.

<sup>2</sup> Based on landings from NMFS RAM Division

<sup>3</sup> Weight combined with the previous month for confidentiality purposes.

<sup>4</sup> Weight combined with the following month for confidentiality purposes.

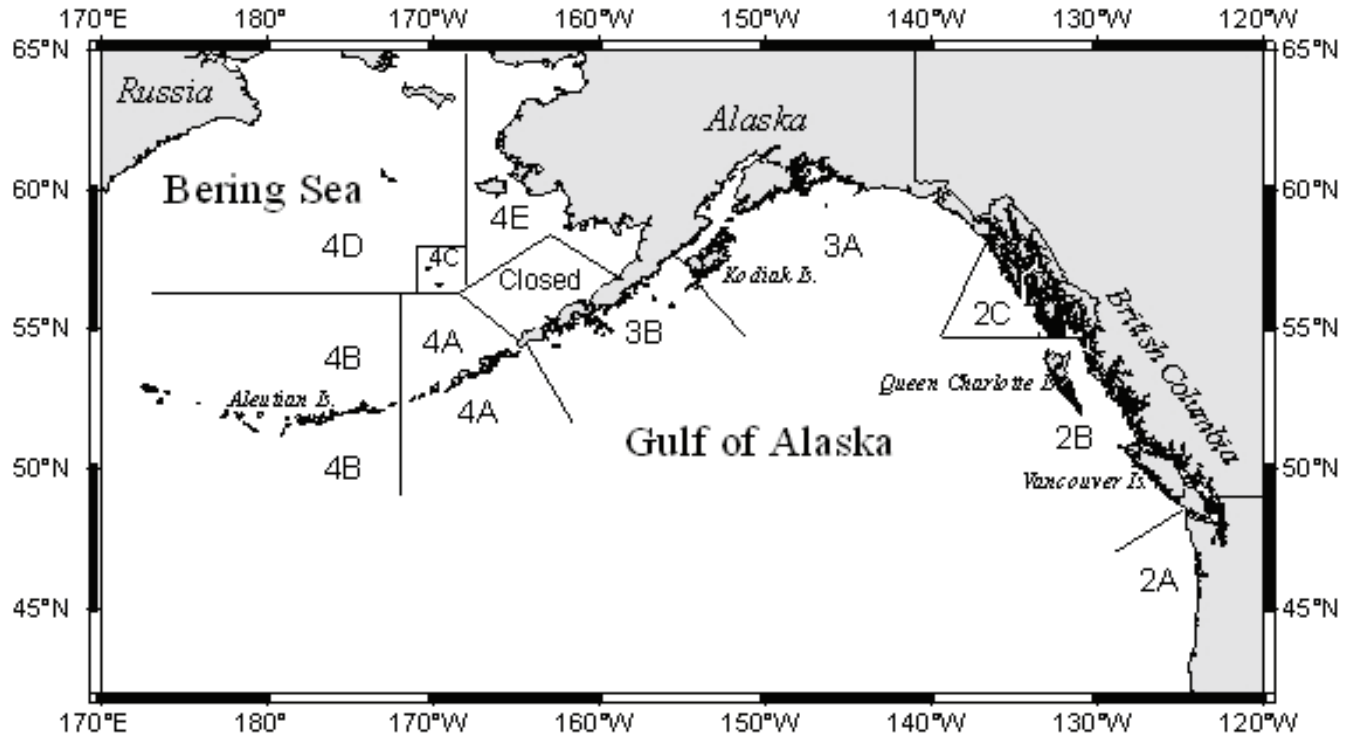


Figure 1. IPHC regulatory areas for the 2011 fishery.